

Product datasheet for **TA341800**

NKX2.3 (NKX2-3) Rabbit Polyclonal Antibody

Product data:

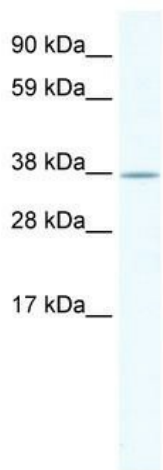
Product Type:	Primary Antibodies
Applications:	WB
Recommended Dilution:	WB
Reactivity:	Mouse
Host:	Rabbit
Isotype:	IgG
Clonality:	Polyclonal
Immunogen:	The immunogen for anti-NKX2-3 antibody: synthetic peptide directed towards the middle region of mouse NKX2-3. Synthetic peptide located within the following region: GTHAPPPPPRRVAVPVLVRDGGKPCVTPSAQTYGSPYGVGAGAYSNSFPA
Formulation:	Liquid. Purified antibody supplied in 1x PBS buffer with 0.09% (w/v) sodium azide and 2% sucrose. <i>Note that this product is shipped as lyophilized powder to China customers.</i>
Concentration:	lot specific
Conjugation:	Unconjugated
Storage:	Store at -20°C as received.
Stability:	Stable for 12 months from date of receipt.
Predicted Protein Size:	40 kDa
Gene Name:	NK2 homeobox 3
Database Link:	NP_660328 Entrez Gene 18089 Mouse Q8TAU0
Background:	NKX2C is a member ofThe NKX family of homeodomain-containing transcription factors, which are implicated in many aspects of cell type specification and maintenance of differentiated tissue functions.
Synonyms:	CSX3; NK2.3; NKX2.3; NKX2C; NKX4-3
Note:	Immunogen Sequence Homology: Rat: 100%; Mouse: 100%; Dog: 85%; Pig: 85%; Bovine: 85%; Guinea pig: 85%; Human: 77%



[View online »](#)

Protein Families: Transcription Factors

Product images:



WB Suggested Anti-NKX2-3 Antibody Titration:
1.25 ug/ml; ELISA Titer: 1:312500; Positive
Control: NIH/3T3 cell lysate