

## Product datasheet for **TA341799**

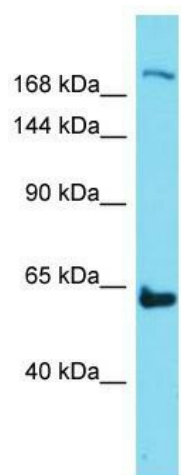
### Neo1 Rabbit Polyclonal Antibody

#### Product data:

Product Type:	Primary Antibodies
Applications:	WB
Recommended Dilution:	WB
Reactivity:	Mouse
Host:	Rabbit
Isotype:	IgG
Clonality:	Polyclonal
Immunogen:	The immunogen for Anti-Neo1 antibody is: synthetic peptide directed towards the N-terminal region of Mouse Neo1. Synthetic peptide located within the following region: PPPPLLLLLPLLLLGRPASGAAATKSGSPQASVRTFTPFYFLVEP
Formulation:	Liquid. Purified antibody supplied in 1x PBS buffer with 0.09% (w/v) sodium azide and 2% sucrose. <i>Note that this product is shipped as lyophilized powder to China customers.</i>
Concentration:	lot specific
Conjugation:	Unconjugated
Storage:	Store at -20°C as received.
Stability:	Stable for 12 months from date of receipt.
Predicted Protein Size:	163 kDa
Gene Name:	neogenin
Database Link:	<a href="#">NP_032710</a> <a href="#">Entrez Gene 18007 Mouse</a>
Background:	The function of This protein remains unknown.
Synonyms:	DKFZp547A066; DKFZp547B146; HsT17534; IGDCC2; NGN
Note:	Immunogen Sequence Homology: Mouse: 100%



[View online »](#)

**Product images:**

Host: Rabbit; Target Name: Neo1; Sample Tissue: Mouse Thymus lysates; Antibody Dilution: 1.0 ug/ml