

Product datasheet for **TA341795**

FOXC1 Rabbit Polyclonal Antibody

Product data:

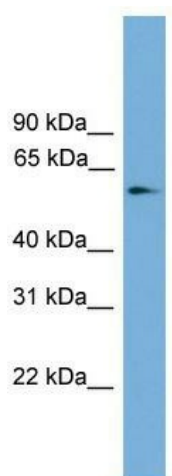
Product Type:	Primary Antibodies
Applications:	WB
Recommended Dilution:	WB
Reactivity:	Mouse
Host:	Rabbit
Isotype:	IgG
Clonality:	Polyclonal
Immunogen:	The immunogen for anti-Foxc1 antibody: synthetic peptide directed towards the n terminal of mouse Foxc1. Synthetic peptide located within the following region: MQARYSVSSPNSLGVVPYLGGEQSYRAAAAAAGGGYTAMPAPMSVYSHP
Formulation:	Liquid. Purified antibody supplied in 1x PBS buffer with 0.09% (w/v) sodium azide and 2% sucrose. <i>Note that this product is shipped as lyophilized powder to China customers.</i>
Concentration:	lot specific
Conjugation:	Unconjugated
Storage:	Store at -20°C as received.
Stability:	Stable for 12 months from date of receipt.
Predicted Protein Size:	57
Gene Name:	forkhead box C1
Database Link:	NP_001444 Entrez Gene 17300 Mouse Q12948
Background:	Transcriptional regulator. Regulates FOXO1 through binding to a conserved element, 5'-GTAAACAAA-3' in its promoter region, implicating FOXC1 as an important regulator of cell viability and resistance to oxidative stress inThe eye.
Synonyms:	ARA; FKHL7; FREAC-3; FREAC3; IGDA; IHG1; IRID1; RIEG3
Note:	Immunogen Sequence Homology: Rat: 100%; Human: 100%; Mouse: 100%; Zebrafish: 100%; Dog: 86%; Horse: 86%; Bovine: 86%



[View online »](#)

Protein Families: Druggable Genome, Transcription Factors

Product images:



WB Suggested Anti-Foxc1 Antibody Titration: 0.2-1 ug/ml; Positive Control: NIH/3T3 cell lysate