

Product datasheet for **TA341794**

Mesp2 Rabbit Polyclonal Antibody

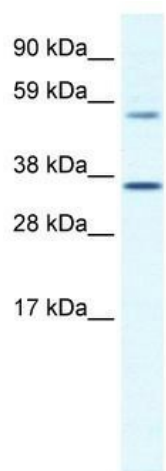
Product data:

Product Type:	Primary Antibodies
Applications:	WB
Recommended Dilution:	WB
Reactivity:	Mouse
Host:	Rabbit
Isotype:	IgG
Clonality:	Polyclonal
Immunogen:	The immunogen for anti-MESP2 antibody: synthetic peptide directed towards the C terminal of mouse MESP2. Synthetic peptide located within the following region: SCQRLQPQPQPQWGCWGHDAEVLSTSEDQGSSPALQLPVASPTPSSGL
Formulation:	Liquid. Purified antibody supplied in 1x PBS buffer with 0.09% (w/v) sodium azide and 2% sucrose.
Concentration:	lot specific
Conjugation:	Unconjugated
Storage:	Store at -20°C as received.
Stability:	Stable for 12 months from date of receipt.
Predicted Protein Size:	41 kDa
Gene Name:	mesoderm posterior 2
Database Link:	NP_032615 Entrez Gene 17293 Mouse O08574
Background:	Somite boundaries formed during embryogenesis, atThe interface between Notch1-activated and -repressed domains. Genetic and biochemical studies indicate thatThis interface is generated by suppression of Notch activity by mesoderm posterior 2 (Mesp2) through induction ofThe lunatic fringe gene (Lfng). It is proposed thatThe oscillation of Notch activity is arrested and translated inThe wavefront by Mesp2.
Synonyms:	bHLHc6; SCDO2
Note:	Immunogen Sequence Homology: Mouse: 100%; Rat: 93%



[View online »](#)

Product images:



WB Suggested Anti-MESP2 Antibody Titration:
1.25 ug/ml; ELISA Titer: 1:62500; Positive Control:
SP2/O cell lysate