

Product datasheet for **TA341792**

Mef2b Rabbit Polyclonal Antibody

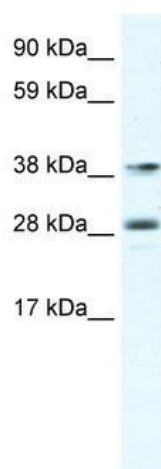
Product data:

Product Type:	Primary Antibodies
Applications:	WB
Recommended Dilution:	WB
Reactivity:	Human
Host:	Rabbit
Isotype:	IgG
Clonality:	Polyclonal
Immunogen:	The immunogen for anti-MEF2B antibody: synthetic peptide corresponding to a region of Mouse. Synthetic peptide located within the following region: PVARSLCKEGPPSRGASPTPPVSIKSERLSPVTGTSGDFPRSFYPLLL
Formulation:	Liquid. Purified antibody supplied in 1x PBS buffer with 0.09% (w/v) sodium azide and 2% sucrose. <i>Note that this product is shipped as lyophilized powder to China customers.</i>
Concentration:	lot specific
Conjugation:	Unconjugated
Storage:	Store at -20°C as received.
Stability:	Stable for 12 months from date of receipt.
Predicted Protein Size:	38 kDa
Gene Name:	myocyte enhancer factor 2B
Database Link:	NP_032604 Entrez Gene 100271849 Human
Background:	MEF2b is involved in regulation of fast Myosin heavy chain transcription
Synonyms:	FLJ32648; RSRFR2; XMEF2
Note:	Immunogen Sequence Homology: Rat: 100%; Mouse: 100%



[View online »](#)

Product images:



WB Suggested Anti-MEF2B Antibody Titration:
0.625 ug/ml; ELISA Titer: 1:312500; Positive
Control: Human Lymphnode