

Product datasheet for **TA341790**

Ascl2 Rabbit Polyclonal Antibody

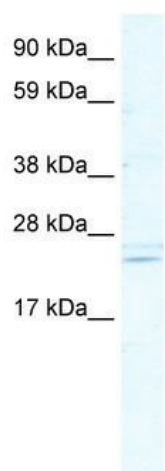
Product data:

Product Type:	Primary Antibodies
Applications:	WB
Recommended Dilution:	WB
Reactivity:	Mouse
Host:	Rabbit
Isotype:	IgG
Clonality:	Polyclonal
Immunogen:	The immunogen for anti-ASCL2 antibody: synthetic peptide directed towards the C terminal of mouse ASCL2. Synthetic peptide located within the following region: PHGGANKKLSKVETLRSAYEYIRALQRLLAEHDAVRAALAGLLTPATPP
Formulation:	Liquid. Purified antibody supplied in 1x PBS buffer with 0.09% (w/v) sodium azide and 2% sucrose. <i>Note that this product is shipped as lyophilized powder to China customers.</i>
Concentration:	lot specific
Conjugation:	Unconjugated
Storage:	Store at -20°C as received.
Stability:	Stable for 12 months from date of receipt.
Predicted Protein Size:	29 kDa
Gene Name:	achaete-scute family bHLH transcription factor 2
Database Link:	NP_032580 Entrez Gene 17173 Mouse O35885
Background:	AS-C proteins are involved inThe determination ofThe neuronal precursors inThe peripheral nervous system andThe central nervous system.
Synonyms:	ASH2; bHLHa45; HASH2; MASH2
Note:	Immunogen Sequence Homology: Mouse: 100%; Rat: 93%; Pig: 92%; Bovine: 92%; Guinea pig: 86%; Dog: 85%



[View online »](#)

Product images:



WB Suggested Anti-ASCL2 Antibody Titration: 5.0 ug/ml; ELISA Titer: 1:62500; Positive Control: NIH/3T3 cell lysate