

Product datasheet for **TA341789**

Lyl1 Rabbit Polyclonal Antibody

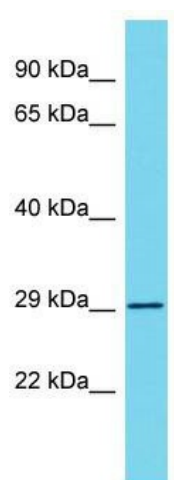
Product data:

Product Type:	Primary Antibodies
Applications:	WB
Recommended Dilution:	WB
Reactivity:	Rat
Host:	Rabbit
Isotype:	IgG
Clonality:	Polyclonal
Immunogen:	The immunogen for Anti-Lyl1 antibody is: synthetic peptide directed towards the C-terminal region of Rat Lyl1. Synthetic peptide located within the following region: GVEGNARCGAGHRVEAARSQPVLPGDCDGPNGSVRPIKMEQTALSPEVR
Formulation:	Liquid. Purified antibody supplied in 1x PBS buffer with 0.09% (w/v) sodium azide and 2% sucrose. <i>Note that this product is shipped as lyophilized powder to China customers.</i>
Concentration:	lot specific
Conjugation:	Unconjugated
Storage:	Store at -20°C as received.
Stability:	Stable for 12 months from date of receipt.
Predicted Protein Size:	30 kDa
Gene Name:	lymphoblastic leukemia associated hematopoiesis regulator 1
Database Link:	NP_001007678 Entrez Gene 304663 Rat Q66HH3
Background:	The function of This protein remains unknown.
Synonyms:	bHLHa18
Note:	Immunogen Sequence Homology: Mouse: 100%; Rat: 86%



[View online »](#)

Product images:



Host: Rabbit; Target Name: Lyl1; Sample Tissue: Rat Spleen lysates; Antibody Dilution: 1.0 ug/ml