

Product datasheet for **TA341788**

LHX5 Rabbit Polyclonal Antibody

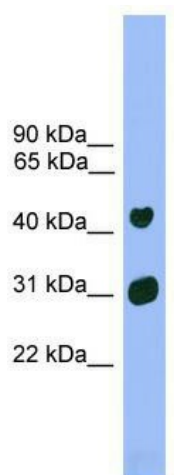
Product data:

Product Type:	Primary Antibodies
Applications:	WB
Recommended Dilution:	WB
Reactivity:	Mouse
Host:	Rabbit
Isotype:	IgG
Clonality:	Polyclonal
Immunogen:	The immunogen for anti-Lhx5 antibody: synthetic peptide directed towards the middle region of mouse Lhx5. Synthetic peptide located within the following region: FFRSPRRMRPLGGRLDESEMLGSTPYTYG DYQSDYYAPGGNYDFFAHGP
Formulation:	Liquid. Purified antibody supplied in 1x PBS buffer with 0.09% (w/v) sodium azide and 2% sucrose.
Concentration:	lot specific
Conjugation:	Unconjugated
Storage:	Store at -20°C as received.
Stability:	Stable for 12 months from date of receipt.
Predicted Protein Size:	44 kDa
Gene Name:	LIM homeobox 5
Database Link:	NP_071758 Entrez Gene 16873 Mouse Q9H2C1
Background:	Plays an essential role inThe regulation of neuronal differentiation and migration during development ofThe central nervous system.
Synonyms:	MGC129689
Note:	Immunogen Sequence Homology: Rat: 100%; Mouse: 100%; Dog: 93%; Pig: 93%; Horse: 93%; Human: 93%; Bovine: 93%; Rabbit: 93%; Guinea pig: 93%; Zebrafish: 75%
Protein Families:	Druggable Genome



[View online »](#)

Product images:



WB Suggested Anti-Lhx5 Antibody Titration: 0.2-1 ug/ml; ELISA Titer: 1:312500; Positive Control: Mouse Heart