

## Product datasheet for **TA341787**

### **KLF2 Rabbit Polyclonal Antibody**

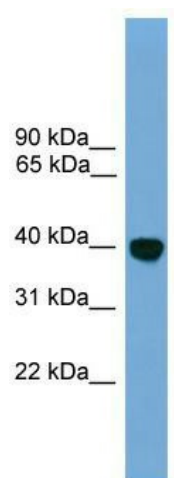
#### **Product data:**

Product Type:	Primary Antibodies
Applications:	WB
Recommended Dilution:	WB
Reactivity:	Mouse
Host:	Rabbit
Isotype:	IgG
Clonality:	Polyclonal
Immunogen:	The immunogen for anti-Klf2 antibody: synthetic peptide corresponding to a region of Mouse. Synthetic peptide located within the following region: MALSEPILPFSFATFASPCERGLQERWPRNEPEAGGTDEDLNNVLDFILSM
Formulation:	Liquid. Purified antibody supplied in 1x PBS buffer with 0.09% (w/v) sodium azide and 2% sucrose. <i>Note that this product is shipped as lyophilized powder to China customers.</i>
Concentration:	lot specific
Conjugation:	Unconjugated
Storage:	Store at -20°C as received.
Stability:	Stable for 12 months from date of receipt.
Predicted Protein Size:	38 kDa
Gene Name:	Kruppel-like factor 2
Database Link:	<a href="#">NP_057354</a> <a href="#">Entrez Gene 16598 Mouse</a> <a href="#">Q9Y5W3</a>
Background:	Binds toThe CACCC box inThe beta-globin gene promoter and activates transcription.
Synonyms:	LKLF
Note:	Immunogen Sequence Homology: Mouse: 100%; Rat: 93%; Pig: 86%; Human: 86%
Protein Families:	Transcription Factors



[View online »](#)

## Product images:



WB Suggested Anti-Klf2 Antibody Titration: 0.2-1 ug/ml; ELISA Titer: 1:312500; Positive Control: Mouse Small Intestine