

Product datasheet for **TA341785**

IRF1 Rabbit Polyclonal Antibody

Product data:

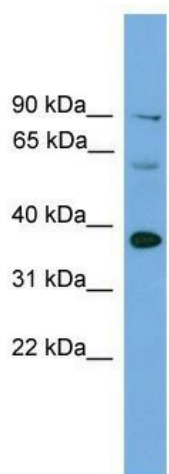
Product Type:	Primary Antibodies
Applications:	WB
Recommended Dilution:	WB
Reactivity:	Mouse
Host:	Rabbit
Isotype:	IgG
Clonality:	Polyclonal
Immunogen:	The immunogen for anti-Irf1 antibody: synthetic peptide corresponding to a region of Mouse. Synthetic peptide located within the following region: DIIPDSTTDLYNLQVSPMPSTSEAATDEDEEGKIAEDLMKLFQSEWQPT
Formulation:	Liquid. Purified antibody supplied in 1x PBS buffer with 0.09% (w/v) sodium azide and 2% sucrose. <i>Note that this product is shipped as lyophilized powder to China customers.</i>
Concentration:	lot specific
Conjugation:	Unconjugated
Storage:	Store at -20°C as received.
Stability:	Stable for 12 months from date of receipt.
Predicted Protein Size:	37 kDa
Gene Name:	interferon regulatory factor 1
Database Link:	NP_002189 Entrez Gene 16362 Mouse P10914
Background:	Irf1 specifically binds toThe upstream regulatory region of type I IFN and IFN-inducible MHC class I genes (the interferon consensus sequence (ICS)) and activates those genes.Irf1 acts as a tumor suppressor.
Synonyms:	IRF-1; MAR
Note:	Immunogen Sequence Homology: Mouse: 100%; Pig: 92%; Rat: 92%; Guinea pig: 92%; Sheep: 85%; Bovine: 85%; Rabbit: 85%; Dog: 83%; Horse: 83%; Human: 83%; Yeast: 83%



[View online »](#)

Protein Families: Druggable Genome, Transcription Factors

Product images:



WB Suggested Anti-Irf1 Antibody Titration: 0.2-1 ug/ml; Positive Control: Mouse Uterus