

## Product datasheet for **TA341784**

### IRF1 Rabbit Polyclonal Antibody

#### Product data:

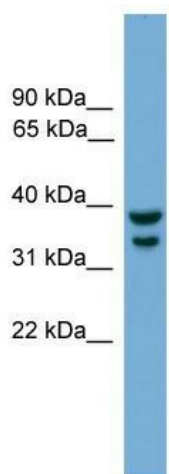
Product Type:	Primary Antibodies
Applications:	WB
Recommended Dilution:	WB
Reactivity:	Mouse
Host:	Rabbit
Isotype:	IgG
Clonality:	Polyclonal
Immunogen:	The immunogen for anti-Irf1 antibody: synthetic peptide corresponding to a region of Mouse. Synthetic peptide located within the following region: HIDGKGYLLNEPGTQLSSVYGFDFSCKEEPEIDSPRGDIGIGIQHFTEMK
Formulation:	Liquid. Purified antibody supplied in 1x PBS buffer with 0.09% (w/v) sodium azide and 2% sucrose. <i>Note that this product is shipped as lyophilized powder to China customers.</i>
Concentration:	lot specific
Conjugation:	Unconjugated
Storage:	Store at -20°C as received.
Stability:	Stable for 12 months from date of receipt.
Predicted Protein Size:	37 kDa
Gene Name:	interferon regulatory factor 1
Database Link:	<a href="#">NP_002189</a> <a href="#">Entrez Gene 16362 Mouse P10914</a>
Background:	Irf1 specifically binds toThe upstream regulatory region of type I IFN and IFN-inducible MHC class I genes (the interferon consensus sequence (ICS)) and activates those genes. Irf1 acts as a tumor suppressor.
Synonyms:	IRF-1; MAR
Note:	Immunogen Sequence Homology: Mouse: 100%; Rat: 93%; Human: 93%; Sheep: 90%; Bovine: 90%; Pig: 86%; Rabbit: 86%; Guinea pig: 86%; Dog: 80%



[View online »](#)

Protein Families: Druggable Genome, Transcription Factors

### Product images:



WB Suggested Anti-Irf1 Antibody Titration: 0.2-1 ug/ml; Positive Control: Mouse Muscle