

Product datasheet for TA341782

HSF2 Rabbit Polyclonal Antibody

Product data:

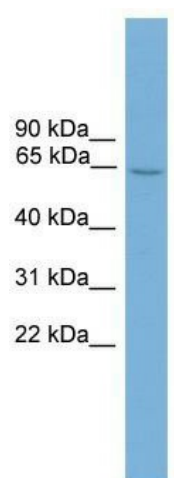
Product Type:	Primary Antibodies
Applications:	WB
Recommended Dilution:	WB
Reactivity:	Mouse
Host:	Rabbit
Isotype:	IgG
Clonality:	Polyclonal
Immunogen:	The immunogen for anti-Hsf2 antibody: synthetic peptide corresponding to a region of Mouse. Synthetic peptide located within the following region: SAIEQGSTTASSEVPSVDKPIEVDELDDSSLDPEPTQSKLVRLEPLTEA
Formulation:	Liquid. Purified antibody supplied in 1x PBS buffer with 0.09% (w/v) sodium azide and 2% sucrose. <i>Note that this product is shipped as lyophilized powder to China customers.</i>
Concentration:	lot specific
Conjugation:	Unconjugated
Storage:	Store at -20°C as received.
Stability:	Stable for 12 months from date of receipt.
Predicted Protein Size:	58 kDa
Gene Name:	heat shock transcription factor 2
Database Link:	NP_004497 Entrez Gene 15500 Mouse Q03933
Background:	DNA-binding protein that specifically binds heat shock promoter elements (HSE) and activates transcription. In higher eukaryotes, HSF is unable to bind to the HSE unless the cells are heat shocked. HSF2 is expressed in a form that binds DNA constitutively but loses DNA binding by incubation at greater than 41 degrees C.
Synonyms:	HSF 2; HSTF 2
Note:	Immunogen Sequence Homology: Rat: 100%; Mouse: 100%; Human: 86%; Rabbit: 86%



[View online »](#)

Protein Families: Transcription Factors

Product images:



WB Suggested Anti-Hsf2 Antibody Titration: 0.2-1 ug/ml; ELISA Titer: 1:312500; Positive Control: Mouse Uterus