

Product datasheet for **TA341780**

Hoxb13 Rabbit Polyclonal Antibody

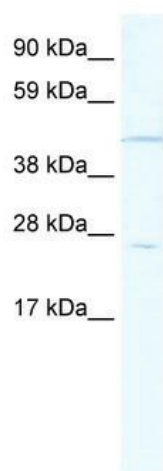
Product data:

Product Type:	Primary Antibodies
Applications:	WB
Recommended Dilution:	WB
Reactivity:	Human
Host:	Rabbit
Isotype:	IgG
Clonality:	Polyclonal
Immunogen:	The immunogen for anti-HOXB13 antibody: synthetic peptide directed towards the middle region of mouse HOXB13. Synthetic peptide located within the following region: GYFGGGYSCRVSRSLLKPCAQTAALATYPSETPAPGEEYPSRPTEFAFY
Formulation:	Liquid. Purified antibody supplied in 1x PBS buffer with 0.09% (w/v) sodium azide and 2% sucrose. <i>Note that this product is shipped as lyophilized powder to China customers.</i>
Concentration:	lot specific
Conjugation:	Unconjugated
Storage:	Store at -20°C as received.
Stability:	Stable for 12 months from date of receipt.
Predicted Protein Size:	31 kDa
Gene Name:	homeobox B13
Database Link:	NP_032293 Entrez Gene 10481 Human P70321
Background:	Sequence-specific transcription factor which is part of a developmental regulatory system that provides cells with specific positional identities onThe anterior-posterior axis.
Synonyms:	PSGD
Note:	Immunogen Sequence Homology: Rat: 100%; Mouse: 100%; Pig: 79%; Horse: 79%; Rabbit: 79%; Guinea pig: 79%



[View online »](#)

Product images:



WB Suggested Anti-HOXB13 Antibody Titration:
1.25 ug/ml; ELISA Titer: 1:312500; Positive
Control: Human Prostate