

Product datasheet for **TA341775**

Hex (HHEX) Rabbit Polyclonal Antibody

Product data:

| | |
|-------------------------|---|
| Product Type: | Primary Antibodies |
| Applications: | WB |
| Recommended Dilution: | WB |
| Reactivity: | Mouse |
| Host: | Rabbit |
| Isotype: | IgG |
| Clonality: | Polyclonal |
| Immunogen: | The immunogen for anti-Hhex antibody: synthetic peptide directed towards the c terminal of mouse Hhex. Synthetic peptide located within the following region: SLDTSCEQGQDLPSEQNKGASLDRSQCSPPASQEDPDSEISEDSDQEVD |
| Formulation: | Liquid. Purified antibody supplied in 1x PBS buffer with 0.09% (w/v) sodium azide and 2% sucrose. <i>Note that this product is shipped as lyophilized powder to China customers.</i> |
| Concentration: | lot specific |
| Conjugation: | Unconjugated |
| Storage: | Store at -20°C as received. |
| Stability: | Stable for 12 months from date of receipt. |
| Predicted Protein Size: | 30 kDa |
| Gene Name: | hematopoietically expressed homeobox |
| Database Link: | NP_002720 Entrez Gene 15242 Mouse Q03014 |
| Background: | Hhex recognizesThe DNA sequence 5'-ATTAA-3'. Hhex is a transcriptional repressor.It may play a role in hematopoietic differentiation.Hhex establishes anterior identity at two levels; acts early to enhance canonical WNT-signaling by repressing expression of TLE4, and acts later to inhibit NODAL-signaling by directly targeting NODAL. |
| Synonyms: | HEX; HMPH; HOX11L-PEN; PRH; PRHX |



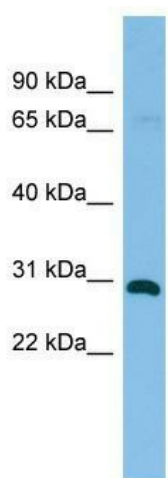
[View online »](#)

Note: Immunogen Sequence Homology: Mouse: 100%; Pig: 92%; Guinea pig: 92%; Dog: 86%; Rat: 86%; Human: 86%; Rabbit: 86%; Horse: 85%; Bovine: 85%

Protein Families: Druggable Genome, Transcription Factors

Protein Pathways: Maturity onset diabetes of the young

Product images:



WB Suggested Anti-Hhex Antibody Titration: 0.2-1 ug/ml; ELISA Titer: 1:62500; Positive Control: Mouse Muscle