

## Product datasheet for **TA341774**

### Hex (HHEX) Rabbit Polyclonal Antibody

#### Product data:

Product Type:	Primary Antibodies
Applications:	WB
Recommended Dilution:	WB
Reactivity:	Mouse
Host:	Rabbit
Isotype:	IgG
Clonality:	Polyclonal
Immunogen:	The immunogen for anti-Hhex antibody: synthetic peptide corresponding to a region of Mouse. Synthetic peptide located within the following region: PQSNKKDALDSLDTSCSEQGQDLPSEQNKGASLDRSQCSPPASQEDPDSE
Formulation:	Liquid. Purified antibody supplied in 1x PBS buffer with 0.09% (w/v) sodium azide and 2% sucrose. <i>Note that this product is shipped as lyophilized powder to China customers.</i>
Concentration:	lot specific
Conjugation:	Unconjugated
Storage:	Store at -20°C as received.
Stability:	Stable for 12 months from date of receipt.
Predicted Protein Size:	30 kDa
Gene Name:	hematopoietically expressed homeobox
Database Link:	<a href="#">NP_002720</a> <a href="#">Entrez Gene 15242 Mouse</a> <a href="#">Q03014</a>
Background:	Hhex recognizesThe DNA sequence 5'-ATTAA-3'.Hhex is a transcriptional repressor. Hhex may play a role in hematopoietic differentiation. Hhex establishes anterior identity at two levels; acts early to enhance canonical WNT-signaling by repressing expression of TLE4, and acts later to inhibit NODAL-signaling by directly targeting NODAL.
Synonyms:	HEX; HMPH; HOX11L-PEN; PRH; PRHX



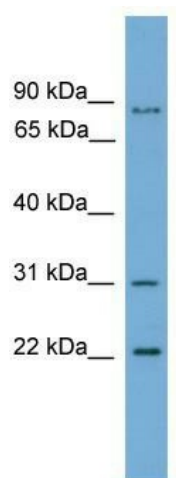
[View online »](#)

**Note:** Immunogen Sequence Homology: Pig: 100%; Rat: 100%; Human: 100%; Mouse: 100%; Dog: 91%; Horse: 91%; Guinea pig: 85%

**Protein Families:** Druggable Genome, Transcription Factors

**Protein Pathways:** Maturity onset diabetes of the young

**Product images:**



WB Suggested Anti-Hhex Antibody Titration: 0.2-1 ug/ml; Positive Control: Mouse Thymus