

## Product datasheet for **TA341772**

### FOXD1 Rabbit Polyclonal Antibody

#### Product data:

Product Type:	Primary Antibodies
Applications:	WB
Recommended Dilution:	WB
Reactivity:	Mouse
Host:	Rabbit
Isotype:	IgG
Clonality:	Polyclonal
Immunogen:	The immunogen for anti-FOXD1 antibody: synthetic peptide directed towards the N terminal of mouse FOXD1. Synthetic peptide located within the following region: EGEDDEEEEDDDDEGGGGRRGGGSRPSSAQRRRRSYAGEDDLEDEEED
Formulation:	Liquid. Purified antibody supplied in 1x PBS buffer with 0.09% (w/v) sodium azide and 2% sucrose. <i>Note that this product is shipped as lyophilized powder to China customers.</i>
Concentration:	lot specific
Conjugation:	Unconjugated
Storage:	Store at -20°C as received.
Stability:	Stable for 12 months from date of receipt.
Predicted Protein Size:	50 kDa
Gene Name:	forkhead box D1
Database Link:	<a href="#">NP_004463</a> <a href="#">Entrez Gene 15229 Mouse Q16676</a>
Background:	Foxd1 is transcription factor required for formation of positional identity inThe developing retina, regionalization ofThe optic chiasm and morphogenesis ofThe kidney. Mice lacking Foxd1 show disrupted cell identity inThe ventrotemporal area ofThe retina and aberrant morphogenesis ofThe optic chiasm.Their kidneys remain fused, have a disorganised ureteric tree and fail to ascend to a lumbar position.
Synonyms:	FKHL8; FREAC-4; FREAC4

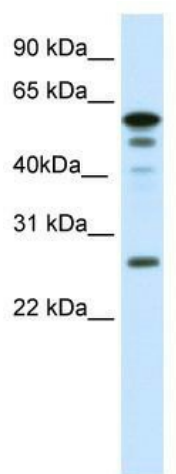


[View online »](#)

**Note:** Immunogen Sequence Homology: Mouse: 100%; Rat: 93%; Human: 93%; Pig: 90%; Sheep: 83%

**Protein Families:** Transcription Factors

**Product images:**



WB Suggested Anti-FOXD1 Antibody Titration:  
0.0625 ug/ml; ELISA Titer: 1:312500; Positive  
Control: SP2/0 cell lysate