

## Product datasheet for **TA341771**

### HFH4 (FOXJ1) Rabbit Polyclonal Antibody

#### Product data:

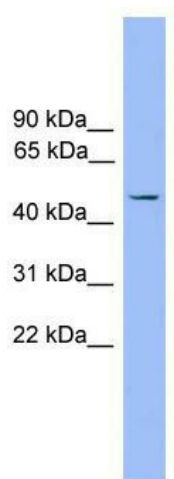
Product Type:	Primary Antibodies
Applications:	WB
Recommended Dilution:	WB
Reactivity:	Mouse
Host:	Rabbit
Isotype:	IgG
Clonality:	Polyclonal
Immunogen:	The immunogen for anti-Foxj1 antibody: synthetic peptide directed towards the middle region of mouse Foxj1. Synthetic peptide located within the following region: HPAFARQASQEPSAAPWGGPLTVNREAQQLLQEFEEATGEGGWGTGEGRL
Formulation:	Liquid. Purified antibody supplied in 1x PBS buffer with 0.09% (w/v) sodium azide and 2% sucrose. <i>Note that this product is shipped as lyophilized powder to China customers.</i>
Concentration:	lot specific
Conjugation:	Unconjugated
Storage:	Store at -20°C as received.
Stability:	Stable for 12 months from date of receipt.
Predicted Protein Size:	45 kDa
Gene Name:	forkhead box J1
Database Link:	<a href="#">NP_001445</a> <a href="#">Entrez Gene 15223 Mouse Q92949</a>
Background:	May play an important role in cell fate determination during lung development and in spermatogenesis.
Synonyms:	FKHL13; HFH-4; HFH4
Note:	Immunogen Sequence Homology: Rat: 100%; Mouse: 100%; Pig: 86%; Horse: 86%; Human: 86%; Bovine: 86%; Guinea pig: 86%; Rabbit: 83%; Dog: 79%



[View online »](#)

Protein Families: Transcription Factors

### Product images:



WB Suggested Anti-Foxj1 Antibody Titration: 0.2-1 ug/ml; ELISA Titer: 1:312500; Positive Control: Mouse Heart