

Product datasheet for **TA341769**

FOXQ1 Rabbit Polyclonal Antibody

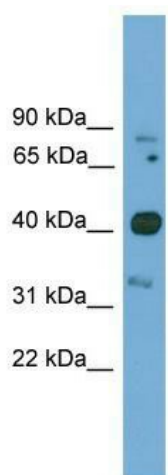
Product data:

Product Type:	Primary Antibodies
Applications:	WB
Recommended Dilution:	WB
Reactivity:	Mouse
Host:	Rabbit
Isotype:	IgG
Clonality:	Polyclonal
Immunogen:	The immunogen for anti-Foxq1 antibody: synthetic peptide directed towards the N terminal of mouse Foxq1. Synthetic peptide located within the following region: MKLEVFVPRAAHGDKMGSDLEGAGSSDVPSPLSAAGDDSLGSDGDCAANS
Formulation:	Liquid. Purified antibody supplied in 1x PBS buffer with 0.09% (w/v) sodium azide and 2% sucrose. <i>Note that this product is shipped as lyophilized powder to China customers.</i>
Concentration:	lot specific
Conjugation:	Unconjugated
Storage:	Store at -20°C as received.
Stability:	Stable for 12 months from date of receipt.
Predicted Protein Size:	41 kDa
Gene Name:	forkhead box Q1
Database Link:	NP_150285 Entrez Gene 15220 Mouse Q9C009
Background:	The function of This protein remains unknown.
Synonyms:	HFH1
Note:	Immunogen Sequence Homology: Rat: 100%; Mouse: 100%; Human: 86%; Pig: 85%
Protein Families:	Transcription Factors



[View online »](#)

Product images:



WB Suggested Anti-Foxq1 Antibody Titration: 0.2-1 ug/ml; Positive Control: Mouse Brain