

Product datasheet for **TA341768**

GCM1 Rabbit Polyclonal Antibody

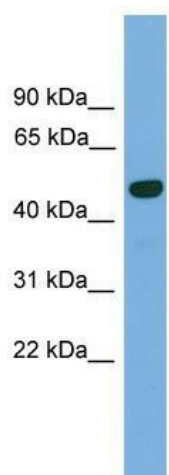
Product data:

Product Type:	Primary Antibodies
Applications:	WB
Recommended Dilution:	WB
Reactivity:	Mouse
Host:	Rabbit
Isotype:	IgG
Clonality:	Polyclonal
Immunogen:	The immunogen for anti-Gcm1 antibody: synthetic peptide directed towards the N terminal of mouse Gcm1. Synthetic peptide located within the following region: KEILSWDINDVKLPQNVKTTDWFQEWPD SYVKHIYSSDDRNAQRHLSSWA
Formulation:	Liquid. Purified antibody supplied in 1x PBS buffer with 0.09% (w/v) sodium azide and 2% sucrose.
Concentration:	lot specific
Conjugation:	Unconjugated
Storage:	Store at -20°C as received.
Stability:	Stable for 12 months from date of receipt.
Predicted Protein Size:	49 kDa
Gene Name:	glial cells missing homolog 1
Database Link:	NP_003634 Entrez Gene 14531 Mouse Q9NP62
Background:	Transcription factor that is necessary for placental development
Synonyms:	GCMA; hGCMA
Note:	Immunogen Sequence Homology: Mouse: 100%; Bovine: 100%; Dog: 93%; Rat: 93%; Horse: 93%; Pig: 86%; Human: 86%; Zebrafish: 86%; Guinea pig: 86%
Protein Families:	Transcription Factors



[View online »](#)

Product images:



WB Suggested Anti-Gcm1 Antibody Titration: 0.2-1 ug/ml; Positive Control: Mouse Heart