

Product datasheet for **TA341767**

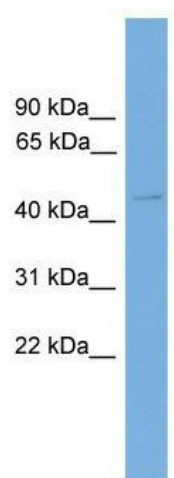
Gcm1 Rabbit Polyclonal Antibody

Product data:

Product Type:	Primary Antibodies
Applications:	WB
Recommended Dilution:	WB
Reactivity:	Mouse
Host:	Rabbit
Isotype:	IgG
Clonality:	Polyclonal
Immunogen:	The immunogen for anti-Gcm1 antibody: synthetic peptide directed towards the middle region of mouse Gcm1. Synthetic peptide located within the following region: EDPTSTLDSMKFYERCKFSSSRIYGSEEQFQPPVPGTYGDYEDLQTNKN
Formulation:	Liquid. Purified antibody supplied in 1x PBS buffer with 0.09% (w/v) sodium azide and 2% sucrose. <i>Note that this product is shipped as lyophilized powder to China customers.</i>
Concentration:	lot specific
Conjugation:	Unconjugated
Storage:	Store at -20°C as received.
Stability:	Stable for 12 months from date of receipt.
Predicted Protein Size:	49 kDa
Gene Name:	glial cells missing homolog 1 (Drosophila)
Database Link:	NP_032129 Entrez Gene 14531 Mouse P70348
Background:	Transcription factor that is necessary for placental development
Synonyms:	GCMA; hGCMA
Note:	Immunogen Sequence Homology: Mouse: 100%; Rat: 77%



[View online »](#)

Product images:

WB Suggested Anti-Gcm1 Antibody Titration: 0.2-1 ug/ml; Positive Control: Mouse Heart