

Product datasheet for TA341766

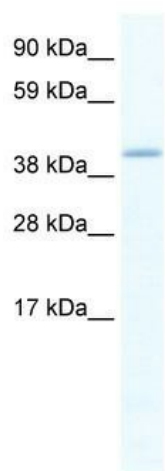
Gata5 Rabbit Polyclonal Antibody

Product data:

Product Type:	Primary Antibodies
Applications:	WB
Recommended Dilution:	WB
Reactivity:	Mouse
Host:	Rabbit
Isotype:	IgG
Clonality:	Polyclonal
Immunogen:	The immunogen for anti-GATA5 antibody: synthetic peptide directed towards the C terminal of mouse GATA5. Synthetic peptide located within the following region: SPTLLNSESSATTLKAESSLASPVCA GPTITSQASSPADES LASSHLEFK
Formulation:	Liquid. Purified antibody supplied in 1x PBS buffer with 0.09% (w/v) sodium azide and 2% sucrose.
Concentration:	lot specific
Conjugation:	Unconjugated
Storage:	Store at -20°C as received.
Stability:	Stable for 12 months from date of receipt.
Predicted Protein Size:	44 kDa
Gene Name:	GATA binding protein 5
Database Link:	NP_032119 Entrez Gene 14464 Mouse P97489
Background:	Binds toThe functionally important CEF-1 nuclear protein binding site inThe cardiac-specific slow/cardiac troponin C transcriptional enhancer. May play an important role inThe transcriptional program(s) that underlies smooth muscle cell diversity.
Synonyms:	bB379O24.1; OTTHUMP00000031490
Note:	Immunogen Sequence Homology: Rat: 100%; Mouse: 100%



[View online »](#)

Product images:

WB Suggested Anti-GATA5 Antibody Titration:
1.25 ug/ml; ELISA Titer: 1:1562500; Positive
Control: SP2/0 cell lysate