

## Product datasheet for **TA341765**

### Foxb2 Rabbit Polyclonal Antibody

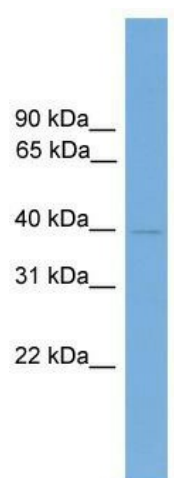
#### Product data:

|                         |   |
|-------------------------|---|
| Product Type:           | Primary Antibodies  |
| Applications:           | WB  |
| Recommended Dilution:   | WB  |
| Reactivity:             | Mouse   |
| Host:                   | Rabbit  |
| Isotype:                | IgG   |
| Clonality:              | Polyclonal  |
| Immunogen:              | The immunogen for anti-Foxb2 antibody: synthetic peptide directed towards the c terminal of mouse Foxb2. Synthetic peptide located within the following region:<br>FGVPVKALCHSANQSLPAVPVPIKPTPALPPVTTLPPALSVPTASQQLPA |
| Formulation:            | Liquid. Purified antibody supplied in 1x PBS buffer with 0.09% (w/v) sodium azide and 2% sucrose.<br><i>Note that this product is shipped as lyophilized powder to China customers.</i>                               |
| Concentration:          | lot specific  |
| Conjugation:            | Unconjugated  |
| Storage:                | Store at -20°C as received.   |
| Stability:              | Stable for 12 months from date of receipt.  |
| Predicted Protein Size: | 45 kDa  |
| Gene Name:              | forkhead box B2   |
| Database Link:          | <a href="#">NP_032049</a><br><a href="#">Entrez Gene 14240 Mouse Q64733</a>   |
| Background:             | Transcription factor.   |
| Synonyms:               | bA159H20.4  |
| Note:                   | Immunogen Sequence Homology: Mouse: 100%; Rabbit: 85%; Bovine: 77%  |



[View online »](#)

## Product images:



WB Suggested Anti-Foxb2 Antibody Titration: 0.2-1 ug/ml; Positive Control: Mouse Spleen