

## Product datasheet for **TA341762**

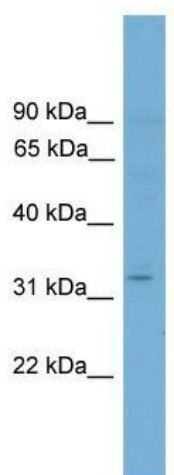
### ETV2 Rabbit Polyclonal Antibody

#### Product data:

Product Type:	Primary Antibodies
Applications:	WB
Recommended Dilution:	WB
Reactivity:	Mouse
Host:	Rabbit
Isotype:	IgG
Clonality:	Polyclonal
Immunogen:	The immunogen for anti-Etv2 antibody: synthetic peptide corresponding to a region of Mouse. Synthetic peptide located within the following region: MDLWNWDEASLQEVPDGKLTGLGAEFGFYFPEVALQEDTPITPMNVEGC
Formulation:	Liquid. Purified antibody supplied in 1x PBS buffer with 0.09% (w/v) sodium azide and 2% sucrose.
Concentration:	lot specific
Purification:	Affinity Purified
Conjugation:	Unconjugated
Storage:	Store at -20°C as received.
Stability:	Stable for 12 months from date of receipt.
Predicted Protein Size:	37 kDa
Gene Name:	ETS variant 2
Database Link:	<a href="#">NP_055024</a> <a href="#">Entrez Gene 14008 Mouse</a> <a href="#">O00321</a>
Background:	Binds to DNA sequences containingThe consensus pentanucleotide 5'-CGGA[AT]-3'.
Synonyms:	ER71; ETSRP71
Note:	Immunogen Sequence Homology: Mouse: 100%; Rat: 93%; Human: 85%; Dog: 77%
Protein Families:	ES Cell Differentiation/IPS



[View online »](#)

**Product images:**

WB Suggested Anti-Etv2 Antibody Titration: 0.2-1 ug/ml; Positive Control: Mouse Brain