

Product datasheet for **TA341761**

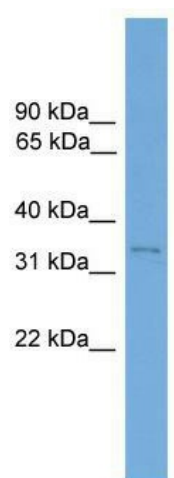
Etv2 Rabbit Polyclonal Antibody

Product data:

Product Type:	Primary Antibodies
Applications:	WB
Recommended Dilution:	WB
Reactivity:	Mouse
Host:	Rabbit
Isotype:	IgG
Clonality:	Polyclonal
Immunogen:	The immunogen for anti-Etv2 antibody: synthetic peptide directed towards the middle region of mouse Etv2. Synthetic peptide located within the following region: GHQSPAFTTPSKSNKQSDRATLTRYSKTNHRGPIQLWQFLLELLHDGARS
Formulation:	Liquid. Purified antibody supplied in 1x PBS buffer with 0.09% (w/v) sodium azide and 2% sucrose. <i>Note that this product is shipped as lyophilized powder to China customers.</i>
Concentration:	lot specific
Conjugation:	Unconjugated
Storage:	Store at -20°C as received.
Stability:	Stable for 12 months from date of receipt.
Predicted Protein Size:	37 kDa
Gene Name:	ets variant 2
Database Link:	NP_031985 Entrez Gene 14008 Mouse P41163
Background:	Binds to DNA sequences containingThe consensus pentanucleotide 5'-CGGA[AT]-3'.
Synonyms:	ER71; ETSRP71; MGC129834; MGC129835; OTTHUMP00000197799
Note:	Immunogen Sequence Homology: Mouse: 100%; Rat: 92%; Bovine: 85%



[View online »](#)

Product images:

WB Suggested Anti-Etv2 Antibody Titration: 0.2-1 ug/ml; Positive Control: Mouse Lung