

## Product datasheet for **TA341760**

### Esx1 Rabbit Polyclonal Antibody

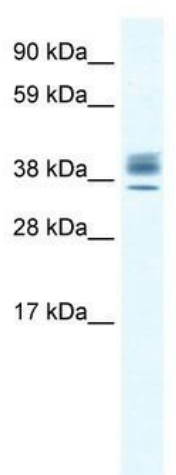
#### Product data:

Product Type:	Primary Antibodies
Applications:	WB
Recommended Dilution:	WB
Reactivity:	Human
Host:	Rabbit
Isotype:	IgG
Clonality:	Polyclonal
Immunogen:	The immunogen for anti-ESX1 antibody: synthetic peptide directed towards the N terminal of mouse ESX1. Synthetic peptide located within the following region: MESHKKCPCCYCTDLKTFVGAVKEETLQDPQPSLSSTLLEGADYQENAES
Formulation:	Liquid. Purified antibody supplied in 1x PBS buffer with 0.09% (w/v) sodium azide and 2% sucrose.
Concentration:	lot specific
Conjugation:	Unconjugated
Storage:	Store at -20°C as received.
Stability:	Stable for 12 months from date of receipt.
Predicted Protein Size:	35 kDa
Gene Name:	extraembryonic, spermatogenesis, homeobox 1
Database Link:	<a href="#">NP_031983</a> <a href="#">Entrez Gene 13984 Mouse</a>
Background:	ESX1 is a homeobox gene related toThe mouse Esx1 homeobox gene. ESX1 is expressed during all stages of placental development and is localized to sparse areas of trophoblast in terminal villi in association with cytotrophoblastic cells. Proteolytic processing of ESX1 plays a role in concerted regulation ofThe cell cycle and transcription in human cells.
Synonyms:	ESX1L; ESX1R; ESXR1
Note:	Immunogen Sequence Homology: Mouse: 100%



[View online »](#)

Product images:



WB Suggested Anti-ESX1 Antibody Titration: 2.5 ug/ml; ELISA Titer: 1:1562500; Positive Control: Human Testis