

Product datasheet for **TA341759**

ESE1 (ELF3) Rabbit Polyclonal Antibody

Product data:

Product Type:	Primary Antibodies
Applications:	WB
Recommended Dilution:	WB
Reactivity:	Mouse
Host:	Rabbit
Isotype:	IgG
Clonality:	Polyclonal
Immunogen:	The immunogen for anti-Elf3 antibody: synthetic peptide corresponding to a region of Mouse. Synthetic peptide located within the following region: TATPQSSHASDSGGSDVDLTLTESKVFPRDGFDPYKKGEPKHGKRKRGRP
Formulation:	Liquid. Purified antibody supplied in 1x PBS buffer with 0.09% (w/v) sodium azide and 2% sucrose. <i>Note that this product is shipped as lyophilized powder to China customers.</i>
Concentration:	lot specific
Conjugation:	Unconjugated
Storage:	Store at -20°C as received.
Stability:	Stable for 12 months from date of receipt.
Predicted Protein Size:	42 kDa
Gene Name:	E74 like ETS transcription factor 3
Database Link:	NP_004424 Entrez Gene 13710 Mouse P78545



[View online »](#)

Background:

Elf3 is a transcriptional activator that binds and transactivates ETS sequences containing the consensus nucleotide core sequence GGA[AT]. Elf3 acts synergistically with POU2F3 to transactivate the SPRR2A promoter and with RUNX1 to transactivate the ANGPT1 promoter. Elf3 also transactivates collagenase, CCL20, CLND7, FLG, KRT8, NOS2, PTGS2, SPRR2B, TGFBR2 and TGM3 promoters. Elf3 represses KRT4 promoter activity. Elf3 is involved in mediating vascular inflammation. Elf3 may play an important role in epithelial cell differentiation and tumorigenesis. Elf3 may be a critical downstream effector of the ERBB2 signaling pathway. Elf3 may be associated with mammary gland development and involution. Elf3 plays an important role in the regulation of transcription with TATA-less promoters in preimplantation embryos, which is essential in preimplantation development.

Synonyms:

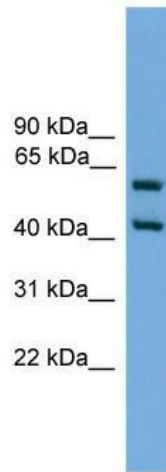
EPR-1; ERT; ESE-1; ESX

Note:

Immunogen Sequence Homology: Rat: 100%; Mouse: 100%; Dog: 93%; Pig: 92%; Bovine: 92%; Guinea pig: 92%; Human: 77%

Protein Families:

Transcription Factors

Product images:

WB Suggested Anti-Elf3 Antibody Titration: 0.2-1 ug/ml; Positive Control: SP2/O cell lysate