

## Product datasheet for **TA341758**

### Elf3 Rabbit Polyclonal Antibody

#### Product data:

Product Type:	Primary Antibodies
Applications:	IHC, WB
Recommended Dilution:	WB, IHC
Reactivity:	Mouse, Human
Host:	Rabbit
Isotype:	IgG
Clonality:	Polyclonal
Immunogen:	The immunogen for anti-Elf3 antibody: synthetic peptide directed towards the N terminal of mouse Elf3. Synthetic peptide located within the following region: MAATCEISNVFSNYFNAMYSSDPTLAPAPPTTFGTEDLVLTNNQMTL
Formulation:	Liquid. Purified antibody supplied in 1x PBS buffer with 0.09% (w/v) sodium azide and 2% sucrose. <i>Note that this product is shipped as lyophilized powder to China customers.</i>
Concentration:	lot specific
Conjugation:	Unconjugated
Storage:	Store at -20°C as received.
Stability:	Stable for 12 months from date of receipt.
Predicted Protein Size:	41 kDa
Gene Name:	E74-like factor 3
Database Link:	<a href="#">NP_031947</a> <a href="#">Entrez Gene 1999 Human</a> <a href="#">Entrez Gene 13710 Mouse</a> <a href="#">Q3UPW2</a>



[View online »](#)

**Background:**

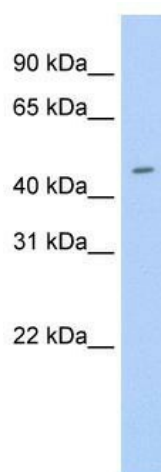
Elf3 is a transcriptional activator that binds and transactivates ETS sequences containing the consensus nucleotide core sequence GGA[AT]. It acts synergistically with POU2F3 to transactivate the SPRR2A promoter and with RUNX1 to transactivate the ANGPT1 promoter (By similarity). It also transactivates collagenase, CCL20, CLND7, FLG, KRT8, NOS2, PTGS2, SPRR2B, TGFBR2 and TGM3 promoters. It represses KRT4 promoter activity (By similarity). It may play an important role in epithelial cell differentiation and tumorigenesis and may be a critical downstream effector of the ERBB2 signaling pathway (By similarity). It may be associated with mammary gland development and involution. It plays an important role in the regulation of transcription with TATA-less promoters in preimplantation embryos, which is essential in preimplantation development.

**Synonyms:**

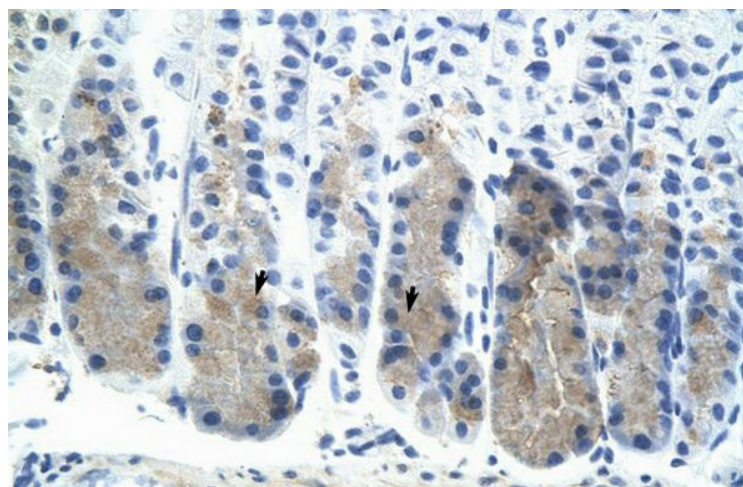
EPR-1; ERT; ESE-1; ESX; JEN; OTTHUMP00000034052

**Note:**

Immunogen Sequence Homology: Mouse: 100%; Rat: 93%

**Product images:**

WB Suggested Anti-Elf3 Antibody Titration: 0.2-1 ug/ml; ELISA Titer: 1:62500; Positive Control: Human Trachea



Mouse Stomach