

## Product datasheet for **TA341754**

### EGR1 Rabbit Polyclonal Antibody

#### Product data:

Product Type:	Primary Antibodies
Applications:	IHC, WB
Recommended Dilution:	IHC, WB
Reactivity:	Mouse, Xenopus
Host:	Rabbit
Isotype:	IgG
Clonality:	Polyclonal
Immunogen:	The immunogen for anti-Egr1 antibody: synthetic peptide corresponding to a region of Mouse. Synthetic peptide located within the following region: PATTSPVPTSYSSPGSSTYPSAHSFGFSPSVATTFASVPPAFPTQV
Formulation:	Liquid. Purified antibody supplied in 1x PBS buffer with 0.09% (w/v) sodium azide and 2% sucrose. <i>Note that this product is shipped as lyophilized powder to China customers.</i>
Concentration:	lot specific
Conjugation:	Unconjugated
Storage:	Store at -20°C as received.
Stability:	Stable for 12 months from date of receipt.
Predicted Protein Size:	56 kDa
Gene Name:	early growth response 1
Database Link:	<a href="#">NP_001955</a> <a href="#">Entrez Gene 13653 Mouse P18146</a>
Background:	Transcriptional regulator. Recognizes and binds toThe DNA sequence 5'-CGCCCCCGC-3'(EGR-site). ActivatesThe transcription of target genes whose products are required for mitogenesis and differentiation.
Synonyms:	AT225; G0S30; KROX-24; NGFI-A; TIS8; ZIF-268; ZNF225
Note:	Immunogen Sequence Homology: Rat: 100%; Mouse: 100%; Dog: 93%; Pig: 93%; Horse: 93%; Human: 93%; Rabbit: 93%; Guinea pig: 93%; Sheep: 92%; Bovine: 92%

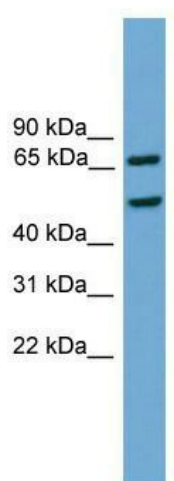


[View online »](#)

Protein Families: Druggable Genome

Protein Pathways: Prion diseases

**Product images:**



**EGR1**

WB Suggested Anti-Egr1 Antibody Titration: 0.2-1 ug/ml; ELISA Titer: 1:62500; Positive Control: Mouse Heart



**Black: EGR1**

Sample Type. Frog brain  
 Primary Antibody Dilution. 1:500  
 Secondary Antibody. Biotinylated goat anti-rabbit  
 Secondary Antibody Dilution. 1:200  
 Color/Signal Descriptions. Black: EGR1  
 Gene Name. Egr1  
 Submitted by. Eva Fischer, Colorado State University

EGR1



Black: EGR1

Sample Type. Frog brain  
Primary Antibody Dilution. 1:500  
Secondary Antibody. Biotinylated goat anti-rabbit  
Secondary Antibody Dilution. 1:200  
Color/Signal Descriptions. Black: EGR1  
Gene Name. Egr1  
Submitted by. Eva Fischer, Colorado State University