

## Product datasheet for **TA341753**

### **Dlx4 Rabbit Polyclonal Antibody**

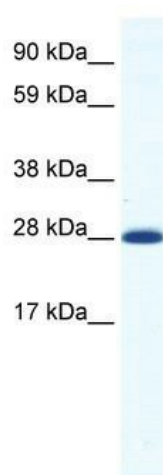
#### **Product data:**

<b>Product Type:</b>	Primary Antibodies
<b>Applications:</b>	WB
<b>Recommended Dilution:</b>	WB
<b>Reactivity:</b>	Mouse
<b>Host:</b>	Rabbit
<b>Isotype:</b>	IgG
<b>Clonality:</b>	Polyclonal
<b>Immunogen:</b>	The immunogen for anti-DLX4 antibody: synthetic peptide directed towards the N terminal of mouse DLX4. Synthetic peptide located within the following region: YSHPGPATPGDSYLP RQQQLVAPSQPFHRPAEHPQELEAESEKLALS LVP
<b>Formulation:</b>	Liquid. Purified antibody supplied in 1x PBS buffer with 0.09% (w/v) sodium azide and 2% sucrose. <i>Note that this product is shipped as lyophilized powder to China customers.</i>
<b>Concentration:</b>	lot specific
<b>Conjugation:</b>	Unconjugated
<b>Storage:</b>	Store at -20°C as received.
<b>Stability:</b>	Stable for 12 months from date of receipt.
<b>Predicted Protein Size:</b>	26 kDa
<b>Gene Name:</b>	distal-less homeobox 4
<b>Database Link:</b>	<a href="#">NP_031893</a> <a href="#">Entrez Gene 13394 Mouse P70436</a>
<b>Background:</b>	May play a role in determiningThe production of hemoglobin S. May act as a repressor.
<b>Synonyms:</b>	BP1; DLX-7; DLX-8; DLX7; DLX8; DLX9
<b>Note:</b>	Immunogen Sequence Homology: Human: 100%; Mouse: 100%; Rat: 86%



[View online »](#)

## Product images:



WB Suggested Anti-DLX4 Antibody Titration: 1.25 ug/ml; ELISA Titer: 1:312500; Positive Control: NIH/3T3 cell lysate