

Product datasheet for **TA341752**

Dlx4 Rabbit Polyclonal Antibody

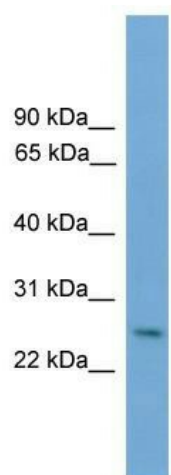
Product data:

Product Type:	Primary Antibodies
Applications:	WB
Recommended Dilution:	WB
Reactivity:	Mouse
Host:	Rabbit
Isotype:	IgG
Clonality:	Polyclonal
Immunogen:	The immunogen for anti-Dlx4 antibody: synthetic peptide corresponding to a region of Mouse. Synthetic peptide located within the following region: AQLGLTQTQVKIWFQNKRSKYKLLKQSSGEPEEDFSGRPPSLSPHSPAL
Formulation:	Liquid. Purified antibody supplied in 1x PBS buffer with 0.09% (w/v) sodium azide and 2% sucrose. <i>Note that this product is shipped as lyophilized powder to China customers.</i>
Concentration:	lot specific
Conjugation:	Unconjugated
Storage:	Store at -20°C as received.
Stability:	Stable for 12 months from date of receipt.
Predicted Protein Size:	27 kDa
Gene Name:	distal-less homeobox 4
Database Link:	NP_031893 Entrez Gene 13394 Mouse P70436
Background:	May play a role in determiningThe production of hemoglobin S. May act as a repressor.
Synonyms:	BP1; DLX-7; DLX-8; DLX7; DLX8; DLX9
Note:	Immunogen Sequence Homology: Rat: 100%; Mouse: 100%; Dog: 93%; Pig: 93%; Human: 93%; Bovine: 93%; Rabbit: 93%; Zebrafish: 92%; Horse: 86%; Guinea pig: 86%



[View online »](#)

Product images:



WB Suggested Anti-Dlx4 Antibody Titration: 0.2-1 ug/ml; ELISA Titer: 1:1562500; Positive Control: NIH/3T3 cell lysate