

## Product datasheet for TA341751

### Cdx4 Rabbit Polyclonal Antibody

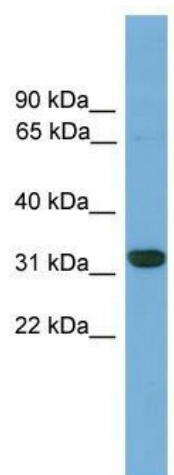
#### Product data:

Product Type:	Primary Antibodies
Applications:	WB
Recommended Dilution:	WB
Reactivity:	Mouse
Host:	Rabbit
Isotype:	IgG
Clonality:	Polyclonal
Immunogen:	The immunogen for anti-Cdx4 antibody: synthetic peptide corresponding to a region of Mouse. Synthetic peptide located within the following region: KSELAVNLGLSERQVKIWFQNRRAKERKMIKKKISQFENTGGSVQSDSGS
Formulation:	Liquid. Purified antibody supplied in 1x PBS buffer with 0.09% (w/v) sodium azide and 2% sucrose. <i>Note that this product is shipped as lyophilized powder to China customers.</i>
Concentration:	lot specific
Conjugation:	Unconjugated
Storage:	Store at -20°C as received.
Stability:	Stable for 12 months from date of receipt.
Predicted Protein Size:	30 kDa
Gene Name:	caudal type homeobox 4
Database Link:	<a href="#">NP_031700</a> <a href="#">Entrez Gene 12592 Mouse Q07424</a>
Background:	The function of This protein remains unknown.
Synonyms:	CDX4
Note:	Immunogen Sequence Homology: Mouse: 100%; Pig: 93%; Rat: 93%; Human: 93%; Bovine: 93%; Rabbit: 93%; Dog: 86%; Horse: 86%



[View online »](#)

## Product images:



WB Suggested Anti-Cdx4 Antibody Titration: 0.2-1 ug/ml; ELISA Titer: 1:312500; Positive Control: Mouse Small Intestine