

Product datasheet for **TA341744**

Arntl Rabbit Polyclonal Antibody

Product data:

Product Type:	Primary Antibodies
Applications:	WB
Recommended Dilution:	WB
Reactivity:	Mouse
Host:	Rabbit
Isotype:	IgG
Clonality:	Polyclonal
Immunogen:	The immunogen for anti-ARNTL antibody: synthetic peptide directed towards the N terminal of mouse ARNTL. Synthetic peptide located within the following region: SGVDCNRKRKGSATDYQLDDFAFEESMDTDKDDPHGRLEYAEHQGRKNA
Formulation:	Liquid. Purified antibody supplied in 1x PBS buffer with 0.09% (w/v) sodium azide and 2% sucrose. <i>Note that this product is shipped as lyophilized powder to China customers.</i>
Concentration:	lot specific
Conjugation:	Unconjugated
Storage:	Store at -20°C as received.
Stability:	Stable for 12 months from date of receipt.
Predicted Protein Size:	26 kDa
Gene Name:	aryl hydrocarbon receptor nuclear translocator-like
Database Link:	NP_001229977 Entrez Gene 11865 Mouse Q9WTL8



[View online »](#)

Background:

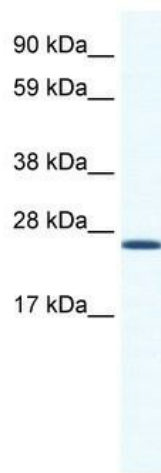
The protein encoded by this gene is a basic helix-loop-helix protein that forms a heterodimer with Clock. This heterodimer binds E-box enhancer elements upstream of Period (Per1, Per2, Per3) and Cryptochrome (Cry1, Cry2) genes and activates transcription of these genes. Per and Cry proteins heterodimerize and repress their own transcription by interacting in a feedback loop with Clock/Arntl complexes. Defects in this gene have been linked to infertility, problems with gluconeogenesis and lipogenesis, and altered sleep patterns. Two transcript variants encoding different isoforms have been found for this gene. [provided by RefSeq, Jan 2014]

Synonyms:

bHLHe5; BMAL1; BMAL1c; JAP3; MGC47515; MOP3; PASD3; TIC

Note:

Immunogen Sequence Homology: Rat: 100%; Mouse: 100%; Rabbit: 100%; Pig: 93%; Horse: 93%; Human: 93%; Sheep: 93%; Bovine: 93%; Guinea pig: 93%; Dog: 86%

Product images:


WB Suggested Anti-ARNTL Antibody Titration:
1.25 ug/ml; ELISA Titer: 1:312500; Positive
Control: NIH/3T3 cell lysate