

Product datasheet for **TA341743**

ALX4 Rabbit Polyclonal Antibody

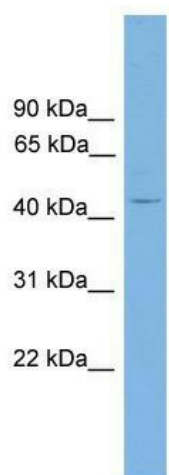
Product data:

Product Type:	Primary Antibodies
Applications:	WB
Recommended Dilution:	WB
Reactivity:	Mouse
Host:	Rabbit
Isotype:	IgG
Clonality:	Polyclonal
Immunogen:	The immunogen for anti-Alx4 antibody: synthetic peptide directed towards the middle region of mouse Alx4. Synthetic peptide located within the following region: EPELPPDSEPVGMDNSYLSVKETGAKGPQDRASAEIPSPLEKTDSESNKG
Formulation:	Liquid. Purified antibody supplied in 1x PBS buffer with 0.09% (w/v) sodium azide and 2% sucrose. <i>Note that this product is shipped as lyophilized powder to China customers.</i>
Concentration:	lot specific
Conjugation:	Unconjugated
Storage:	Store at -20°C as received.
Stability:	Stable for 12 months from date of receipt.
Predicted Protein Size:	43
Gene Name:	ALX homeobox 4
Database Link:	NP_068745 Entrez Gene 11695 Mouse Q9H161
Background:	Transcription factor involved in skull and limb development.
Synonyms:	CRS5; FND2
Note:	Immunogen Sequence Homology: Rat: 100%; Mouse: 100%; Dog: 86%; Pig: 86%; Human: 86%; Bovine: 86%; Guinea pig: 86%; Horse: 79%
Protein Families:	Druggable Genome



[View online »](#)

Product images:



WB Suggested Anti-Alx4 Antibody Titration: 0.2-1 ug/ml; Positive Control: Mouse Brain