

Product datasheet for **TA341742**

PTOP (ACD) Rabbit Polyclonal Antibody

Product data:

Product Type:	Primary Antibodies
Applications:	WB
Recommended Dilution:	WB
Reactivity:	Mouse
Host:	Rabbit
Isotype:	IgG
Clonality:	Polyclonal
Immunogen:	The immunogen for anti-Acd antibody: synthetic peptide directed towards the c terminal of mouse Acd. Synthetic peptide located within the following region: PRTSAQELCSVWEPPERHRDTSFAFYKYETPSASLHTQVQTARLSPQLVA
Formulation:	Liquid. Purified antibody supplied in 1x PBS buffer with 0.09% (w/v) sodium azide and 2% sucrose. <i>Note that this product is shipped as lyophilized powder to China customers.</i>
Concentration:	lot specific
Conjugation:	Unconjugated
Storage:	Store at -20°C as received.
Stability:	Stable for 12 months from date of receipt.
Predicted Protein Size:	45
Gene Name:	adrenocortical dysplasia homolog
Database Link:	NP_001075955 Entrez Gene 497652 Mouse Q96AP0



[View online »](#)

Background:

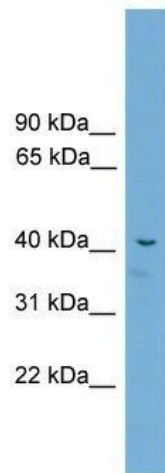
Acd is a component of the shelterin complex (telosome) that is involved in the regulation of telomere length and protection. Shelterin associates with arrays of double-stranded TTAGGG repeats added by telomerase and protects chromosome ends; without its protective activity, telomeres are no longer hidden from the DNA damage surveillance and chromosome ends are inappropriately processed by DNA repair pathways. Acd promotes binding of POT1 to single-stranded telomeric DNA. Acd modulates the inhibitory effects of POT1 on telomere elongation. The ACD-POT1 heterodimer enhances telomere elongation by increasing telomerase processivity. Acd plays a role in shelterin complex assembly. Acd may play an essential role in organogenesis of the developing embryo.

Synonyms:

PIP1; PTOP; TINT1; TPP1

Note:

Immunogen Sequence Homology: Mouse: 100%; Rat: 93%; Dog: 85%; Pig: 85%; Horse: 85%; Human: 85%; Guinea pig: 85%; Bovine: 83%

Product images:

WB Suggested Anti-Acd Antibody Titration: 0.2-1 ug/ml; Positive Control: Mouse Muscle