

## Product datasheet for **TA341740**

### NOTO Rabbit Polyclonal Antibody

#### Product data:

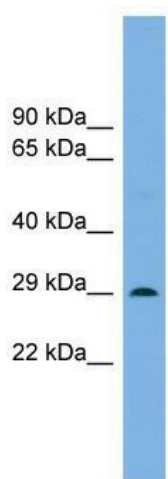
Product Type:	Primary Antibodies
Applications:	WB
Recommended Dilution:	WB
Reactivity:	Mouse
Host:	Rabbit
Isotype:	IgG
Clonality:	Polyclonal
Immunogen:	The immunogen for anti-Noto antibody: synthetic peptide directed towards the n terminal of mouse Noto. Synthetic peptide located within the following region: VQPGSLRPCPGAVSPVPRRLARGRLESSFSVEAILARPKTRELAATSLP
Formulation:	Liquid. Purified antibody supplied in 1x PBS buffer with 0.09% (w/v) sodium azide and 2% sucrose. <i>Note that this product is shipped as lyophilized powder to China customers.</i>
Concentration:	lot specific
Conjugation:	Unconjugated
Storage:	Store at -20°C as received.
Stability:	Stable for 12 months from date of receipt.
Predicted Protein Size:	26 kDa
Gene Name:	notochord homeobox
Database Link:	<a href="#">NP_001127934</a> <a href="#">Entrez Gene 384452 Mouse</a> <a href="#">A8MTQ0</a>
Background:	Noto is a transcription regulator acting downstream of both FOXA2 and T during notochord development. Noto is required for node morphogenesis. Noto is essential for cilia formation in the posterior notochord (PNC) and for left-right patterning; acts upstream of FOXJ1 and RFX3 in this process and is required for the expression of various components important for axonemal assembly and function. Plays a role in regulating axial versus paraxial cell fate.
Synonyms:	Noto



[View online »](#)

**Note:** Immunogen Sequence Homology: Rat: 100%; Mouse: 100%; Pig: 93%; Human: 93%; Guinea pig: 93%; Rabbit: 92%; Bovine: 86%; Dog: 85%

**Product images:**



WB Suggested Anti-Noto Antibody Titration: 0.2-1 ug/ml; ELISA Titer: 1:62500; Positive Control: Mouse Brain