

Product datasheet for **TA341739**

DBX1 Rabbit Polyclonal Antibody

Product data:

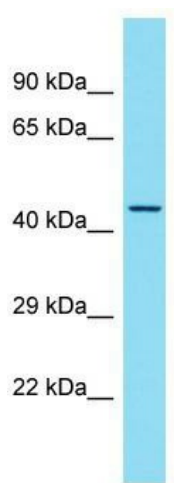
Product Type:	Primary Antibodies
Applications:	WB
Recommended Dilution:	WB
Reactivity:	Rat
Host:	Rabbit
Isotype:	IgG
Clonality:	Polyclonal
Immunogen:	The immunogen for Anti-Dbx1 antibody is: synthetic peptide directed towards the C-terminal region of Rat Dbx1. Synthetic peptide located within the following region: SLAYHAPPDPRHLLEGPLPASPAHSSSPGKPSDFSDSDEDEEGEEDEEIT
Formulation:	Liquid. Purified antibody supplied in 1x PBS buffer with 0.09% (w/v) sodium azide and 2% sucrose.
Concentration:	lot specific
Conjugation:	Unconjugated
Storage:	Store at -20°C as received.
Stability:	Stable for 12 months from date of receipt.
Predicted Protein Size:	36 kDa
Gene Name:	developing brain homeobox 1
Database Link:	NP_001025036 Entrez Gene 292934 Rat A6NMT0
Background:	Could have a role in patterningThe central nervous system during embryogenesis. Has a key role in regulatingThe distinct phenotypic features that distinguish two major classes of ventral interneurons, V0 and V1 neurons. RegulatesThe transcription factor profile, neurotransmitter phenotype, intraspinal migratory path and axonal trajectory of V0 neurons, features that differentiateThem from an adjacent set of V1 neurons.
Synonyms:	developing brain homeobox 1



[View online »](#)

Note: Immunogen Sequence Homology: Rat: 100%; Mouse: 100%; Dog: 93%; Horse: 93%; Rabbit: 93%; Pig: 92%; Yeast: 90%; Human: 86%; Guinea pig: 79%; Bovine: 77%

Product images:



Host: Rabbit; Target Name: Dbx1; Sample Tissue: Rat Small Intestine lysates; Antibody Dilution: 1.0 ug/ml