

## Product datasheet for **TA341737**

### Rhox8 Rabbit Polyclonal Antibody

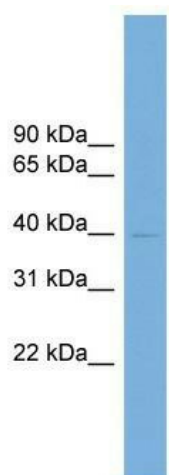
#### Product data:

Product Type:	Primary Antibodies
Applications:	WB
Recommended Dilution:	WB
Reactivity:	Mouse
Host:	Rabbit
Isotype:	IgG
Clonality:	Polyclonal
Immunogen:	The immunogen for anti-Rhox8 antibody: synthetic peptide directed towards the middle region of mouse Rhox8. Synthetic peptide located within the following region: EAAAAAARDETTAGSSAPVDDRSHDAGASSNGEDRGQGEELIPGGTKGL
Formulation:	Liquid. Purified antibody supplied in 1x PBS buffer with 0.09% (w/v) sodium azide and 2% sucrose. <i>Note that this product is shipped as lyophilized powder to China customers.</i>
Concentration:	lot specific
Purification:	Affinity Purified
Conjugation:	Unconjugated
Storage:	Store at -20°C as received.
Stability:	Stable for 12 months from date of receipt.
Predicted Protein Size:	36 kDa
Gene Name:	reproductive homeobox 8
Database Link:	<a href="#">NP_001004193</a> <a href="#">Entrez Gene 434768 Mouse</a>
Background:	The function of This protein remains unknown.
Synonyms:	Tox
Note:	Immunogen Sequence Homology: Mouse: 100%



[View online »](#)

## Product images:



WB Suggested Anti-Rhox8 Antibody Titration: 0.2-1 ug/ml; ELISA Titer: 1:62500; Positive Control: Mouse Heart