

Product datasheet for TA341736

Drgx Rabbit Polyclonal Antibody

Product data:

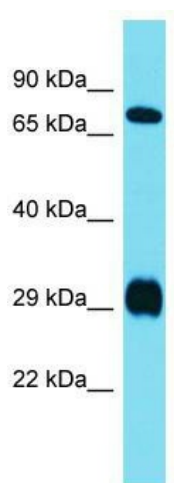
Product Type:	Primary Antibodies
Applications:	WB
Recommended Dilution:	WB
Reactivity:	Rat
Host:	Rabbit
Isotype:	IgG
Clonality:	Polyclonal
Immunogen:	The immunogen for Anti-Prrxl1 antibody is: synthetic peptide directed towards the N-terminal region of Rat Prrxl1. Synthetic peptide located within the following region: MFYFHCPPQLEGTAPFGNHSTGDFDDGFLRRKQRRNRTTFALQQLEALEA
Formulation:	Liquid. Purified antibody supplied in 1x PBS buffer with 0.09% (w/v) sodium azide and 2% sucrose. <i>Note that this product is shipped as lyophilized powder to China customers.</i>
Concentration:	lot specific
Conjugation:	Unconjugated
Storage:	Store at -20°C as received.
Stability:	Stable for 12 months from date of receipt.
Predicted Protein Size:	28 kDa
Gene Name:	dorsal root ganglia homeobox
Database Link:	NP_665710 Entrez Gene 252880 Rat Q62798
Background:	paired homeodomain protein; may be involved in regulating sensory neuron synapse formation [RGD, Feb 2006]. ##Evidence-Data-START## Transcript exon combination :: U29174.1 [ECO:0000332] RNAseq introns :: single sample supports all introns SRS070537, SRS070538 [ECO:0000348] ##Evidence-Data-END##
Synonyms:	DRG11; PRRXL1



[View online »](#)

Note: Immunogen Sequence Homology: Pig: 100%; Rat: 100%; Horse: 100%; Mouse: 100%; Bovine: 100%; Guinea pig: 100%; Dog: 93%; Human: 93%; Rabbit: 86%; Zebrafish: 86%

Product images:



Host: Rabbit; Target Name: Prrxl1; Sample Tissue: Rat Liver lysates; Antibody Dilution: 1.0 ug/ml