

Product datasheet for **TA341734**

MDC1 Rabbit Polyclonal Antibody

Product data:

Product Type:	Primary Antibodies
Applications:	WB
Recommended Dilution:	WB
Reactivity:	Human
Host:	Rabbit
Isotype:	IgG
Clonality:	Polyclonal
Immunogen:	The immunogen for anti-MDC1 antibody: synthetic peptide directed towards the C terminal of human MDC1. Synthetic peptide located within the following region: GKEEDVVTPKGKRKRDRQAEEEPNRIPSRSLRRTKLNQESTAPKVLFTGV
Formulation:	Liquid. Purified antibody supplied in 1x PBS buffer with 0.09% (w/v) sodium azide and 2% sucrose. <i>Note that this product is shipped as lyophilized powder to China customers.</i>
Concentration:	lot specific
Conjugation:	Unconjugated
Storage:	Store at -20°C as received.
Stability:	Stable for 12 months from date of receipt.
Predicted Protein Size:	227 kDa
Gene Name:	mediator of DNA damage checkpoint 1
Database Link:	NP_055456 Entrez Gene 9656 Human Q14676



[View online »](#)

Background:

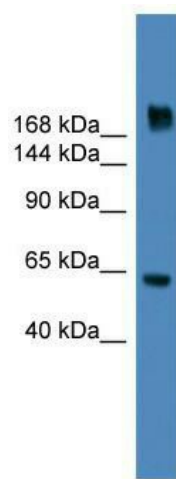
The protein encoded by this gene contains an N-terminal forkhead domain, two BRCA1 C-terminal (BRCT) motifs and a central domain with 13 repetitions of an approximately 41-amino acid sequence. The encoded protein is required to activate the intra-S phase and G2/M phase cell cycle checkpoints in response to DNA damage. This nuclear protein interacts with phosphorylated histone H2AX near sites of DNA double-strand breaks through its BRCT motifs, and facilitates recruitment of the ATM kinase and meiotic recombination 11 protein complex to DNA damage foci. [provided by RefSeq, Jul 2008]

Synonyms:

NFBD1

Note:

Immunogen Sequence Homology: Human: 100%; Pig: 92%; Guinea pig: 92%; Dog: 86%

Product images:

WB Suggested Anti-MDC1 Antibody Titration: 0.2-1 ug/ml; ELISA Titer: 1:12500; Positive Control: HepG2 cell lysate. MDC1 is strongly supported by BioGPS gene expression data to be expressed in Human HepG2 cells