

Product datasheet for TA341733

MEPE Rabbit Polyclonal Antibody

Product data:

Product Type:	Primary Antibodies
Applications:	WB
Recommended Dilution:	WB
Reactivity:	Human
Host:	Rabbit
Isotype:	IgG
Clonality:	Polyclonal
Immunogen:	The immunogen for anti-MEPE antibody: synthetic peptide directed towards the middle region of human MEPE. Synthetic peptide located within the following region: LPGREGNRVDAGSQNAHQKVEFHYPAPSKEKRKEGSSDAAESTNYNEI
Formulation:	Liquid. Purified antibody supplied in 1x PBS buffer with 0.09% (w/v) sodium azide and 2% sucrose. <i>Note that this product is shipped as lyophilized powder to China customers.</i>
Concentration:	lot specific
Conjugation:	Unconjugated
Storage:	Store at -20°C as received.
Stability:	Stable for 12 months from date of receipt.
Predicted Protein Size:	57 kDa
Gene Name:	matrix extracellular phosphoglycoprotein
Database Link:	NP_064588 Entrez Gene 56955 Human Q9NQ76
Background:	This gene encodes a secreted calcium-binding phosphoprotein that belongs to the small integrin-binding ligand, N-linked glycoprotein (SIBLING) family of proteins. Members of this family are components of the extracellular matrix of bone and dentin and regulate bone mineralization. Deficiency of a similar protein in mouse results in increased bone mass. Mice lacking this gene are resistant to aging-related trabecular bone loss. Alternative splicing results in multiple transcript variants. [provided by RefSeq, Mar 2014]



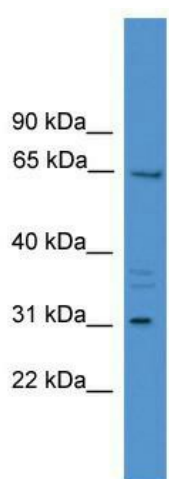
[View online »](#)

Synonyms: OF45

Note: Immunogen Sequence Homology: Human: 100%; Rat: 93%; Horse: 93%; Mouse: 93%; Rabbit: 93%; Dog: 86%; Pig: 86%; Guinea pig: 86%

Protein Families: Secreted Protein

Product images:



WB Suggested Anti-MEPE Antibody Titration: 0.2-1 ug/ml; ELISA Titer: 1:62500; Positive Control: Hela cell lysate