

Product datasheet for **TA341730**

KCTD11 Rabbit Polyclonal Antibody

Product data:

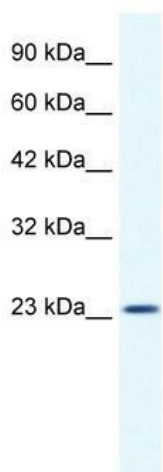
Product Type:	Primary Antibodies
Applications:	WB
Recommended Dilution:	WB
Reactivity:	Human
Host:	Rabbit
Isotype:	IgG
Clonality:	Polyclonal
Immunogen:	The immunogen for anti-KCTD11 antibody: synthetic peptide directed towards the N terminal of human KCTD11. Synthetic peptide located within the following region: ADFYQIRPLLDALRELEASESQGTPAPTAALLHADVDVSPRLVHFSARRGPH
Formulation:	Liquid. Purified antibody supplied in 1x PBS buffer with 0.09% (w/v) sodium azide and 2% sucrose. <i>Note that this product is shipped as lyophilized powder to China customers.</i>
Concentration:	lot specific
Conjugation:	Unconjugated
Storage:	Store at -20°C as received.
Stability:	Stable for 12 months from date of receipt.
Predicted Protein Size:	26 kDa
Gene Name:	potassium channel tetramerization domain containing 11
Database Link:	NP_001002914 Entrez Gene 147040 Human Q693B1
Background:	The KCTD11 gene encodes a protein that has been identified as a suppressor of Hedgehog signaling. Its inactivation might lead to a deregulation ofThe tumor-promoting Hedgehog pathway in medulloblastoma.
Synonyms:	C17orf36; KCASH1; KCTD11; REN
Note:	Immunogen Sequence Homology: Human: 100%; Mouse: 90%



[View online »](#)

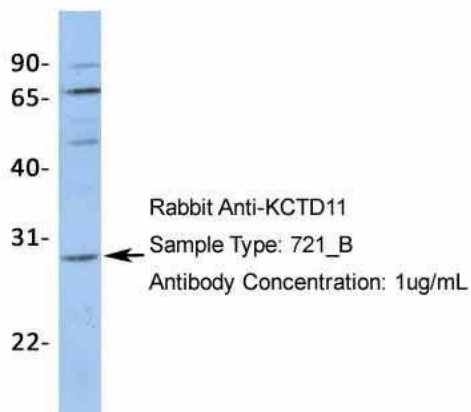
Protein Families: Ion Channels: Other

Product images:



WB Suggested Anti-KCTD11 Antibody Titration: 1.25 ug/ml; ELISA Titer: 1:62500; Positive Control: HepG2 cell lysate

KCTD11



Host: Rabbit; Target Name: KCTD11; Sample Tissue: 721_B; Antibody Dilution: 1.0 ug/ml