

Product datasheet for **TA341725**

CACNB4 Rabbit Polyclonal Antibody

Product data:

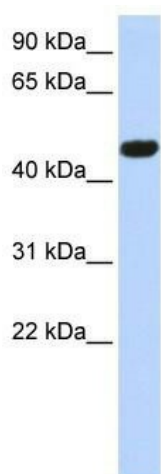
Product Type:	Primary Antibodies
Applications:	WB
Recommended Dilution:	WB
Reactivity:	Human
Host:	Rabbit
Isotype:	IgG
Clonality:	Polyclonal
Immunogen:	The immunogen for anti-CACNB4 antibody: synthetic peptide directed towards the middle region of human CACNB4. Synthetic peptide located within the following region: FDGRISITRVTADISLAKRSVLNPNPSKRAIIERSNTRISSLAEVQSEIERIF
Formulation:	Liquid. Purified antibody supplied in 1x PBS buffer with 0.09% (w/v) sodium azide and 2% sucrose. <i>Note that this product is shipped as lyophilized powder to China customers.</i>
Concentration:	lot specific
Conjugation:	Unconjugated
Storage:	Store at -20°C as received.
Stability:	Stable for 12 months from date of receipt.
Predicted Protein Size:	50 kDa
Gene Name:	calcium voltage-gated channel auxiliary subunit beta 4
Database Link:	NP_000717 Entrez Gene 785 Human O00305



[View online »](#)

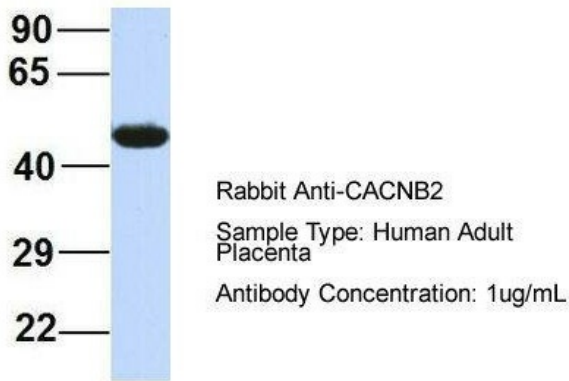
Background:	This gene encodes a member of the beta subunit family of voltage-dependent calcium channel complex proteins. Calcium channels mediate the influx of calcium ions into the cell upon membrane polarization and consist of a complex of alpha-1, alpha-2/delta, beta, and gamma subunits in a 1:1:1:1 ratio. Various versions of each of these subunits exist, either expressed from similar genes or the result of alternative splicing. The protein encoded by this locus plays an important role in calcium channel function by modulating G protein inhibition, increasing peak calcium current, controlling the alpha-1 subunit membrane targeting and shifting the voltage dependence of activation and inactivation. Certain mutations in this gene have been associated with idiopathic generalized epilepsy (IGE) and juvenile myoclonic epilepsy (JME). Multiple transcript variants encoding different isoforms have been found for this gene. [provided by RefSeq, Mar 2009]
Synonyms:	CAB4; CACNLB4; EA5; EIG9; EJM; EJM4; EJM6
Note:	Immunogen Sequence Homology: Dog: 100%; Pig: 100%; Rat: 100%; Horse: 100%; Human: 100%; Mouse: 100%; Bovine: 100%; Rabbit: 100%; Zebrafish: 100%; Guinea pig: 100%
Protein Families:	Druggable Genome, Ion Channels: Other
Protein Pathways:	Arrhythmogenic right ventricular cardiomyopathy (ARVC), Cardiac muscle contraction, Dilated cardiomyopathy, Hypertrophic cardiomyopathy (HCM), MAPK signaling pathway

Product images:



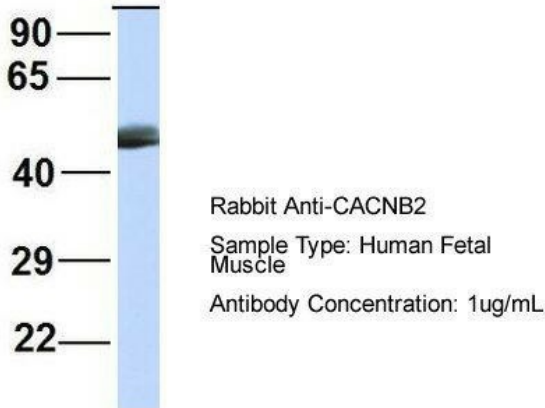
WB Suggested Anti-CACNB4 Antibody Titration:
0.2-1 ug/ml; ELISA Titer: 1:312500; Positive
Control: MCF7 cell lysate

CACNB2



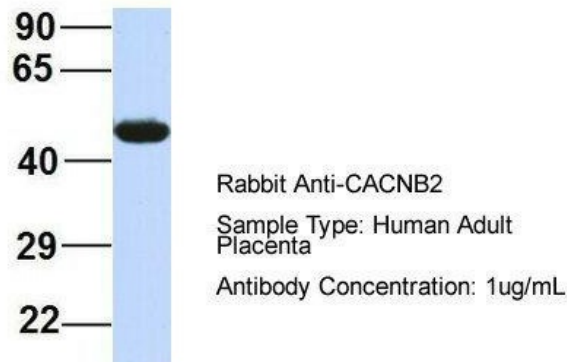
Host: Rabbit; Target Name: CACNB2; Sample Tissue: Human Adult Placenta; Antibody Dilution: 1.0 ug/ml

CACNB2



Host: Rabbit; Target Name: CACNB2; Sample Tissue: Human Fetal Muscle; Antibody Dilution: 1.0 ug/ml

CACNB2



Host: Rabbit; Target Name: CACNB2; Sample Tissue: Human Adult Placenta; Antibody Dilution: 1.0 ug/ml