

## Product datasheet for TA341722

### KCNRG Rabbit Polyclonal Antibody

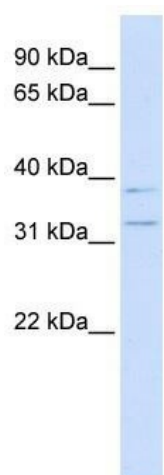
#### Product data:

Product Type:	Primary Antibodies
Applications:	WB
Recommended Dilution:	WB
Reactivity:	Human
Host:	Rabbit
Isotype:	IgG
Clonality:	Polyclonal
Immunogen:	The immunogen for anti-KCNRG antibody: synthetic peptide directed towards the N terminal of human KCNRG. Synthetic peptide located within the following region: MSSQELVTLNVGGKIFTRFSTIKQFPASRLARMLDGRDQEFKMGVGGQIF
Formulation:	Liquid. Purified antibody supplied in 1x PBS buffer with 0.09% (w/v) sodium azide and 2% sucrose. <i>Note that this product is shipped as lyophilized powder to China customers.</i>
Concentration:	lot specific
Conjugation:	Unconjugated
Storage:	Store at -20°C as received.
Stability:	Stable for 12 months from date of receipt.
Predicted Protein Size:	31 kDa
Gene Name:	potassium channel regulator
Database Link:	<a href="#">NP_775876</a> <a href="#">Entrez Gene 283518 Human</a> <a href="#">Q8N5I3</a>
Background:	This gene encodes a protein which regulatesThe activity of voltage-gated potassium channels.This gene is on chromosome 13 and overlapsThe gene for tripartite motif containing 13 onThe same strand. Multiple transcript variants encoding different isoforms have been found forThis gene. [provided by RefSeq, Feb 2012]
Synonyms:	DLTET
Note:	Immunogen Sequence Homology: Horse: 100%; Human: 100%



[View online »](#)

## Product images:



WB Suggested Anti-KCNRG Antibody Titration:  
0.2-1 ug/ml; ELISA Titer: 1:312500; Positive  
Control: Transfected 293T