

Product datasheet for **TA341721**

TPTE Rabbit Polyclonal Antibody

Product data:

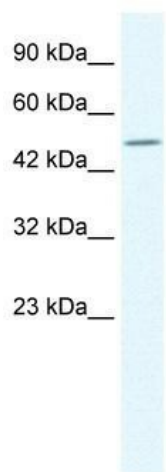
Product Type:	Primary Antibodies
Applications:	IHC, WB
Recommended Dilution:	WB, IHC
Reactivity:	Human
Host:	Rabbit
Isotype:	IgG
Clonality:	Polyclonal
Immunogen:	The immunogen for anti-TPTE antibody: synthetic peptide directed towards the C terminal of human TPTE. Synthetic peptide located within the following region: KILIDVFDGPPLYDDVKVQFFYSNLPTYDNCSEFYFWLHTSFIENNRLL
Formulation:	Liquid. Purified antibody supplied in 1x PBS buffer with 0.09% (w/v) sodium azide and 2% sucrose. <i>Note that this product is shipped as lyophilized powder to China customers.</i>
Concentration:	lot specific
Conjugation:	Unconjugated
Storage:	Store at -20°C as received.
Stability:	Stable for 12 months from date of receipt.
Predicted Protein Size:	45 kDa
Gene Name:	transmembrane phosphatase with tensin homology
Database Link:	NP_954870 Entrez Gene 7179 Human P56180
Background:	This gene encodes a PTEN-related tyrosine phosphatase which may play a role inThe signal transduction pathways ofThe endocrine or spermatogenic function ofThe testis. Alternative splicing results in multiple transcript variants. [provided by RefSeq, Mar 2014]
Synonyms:	CT44; PTEN2
Note:	Immunogen Sequence Homology: Human: 100%



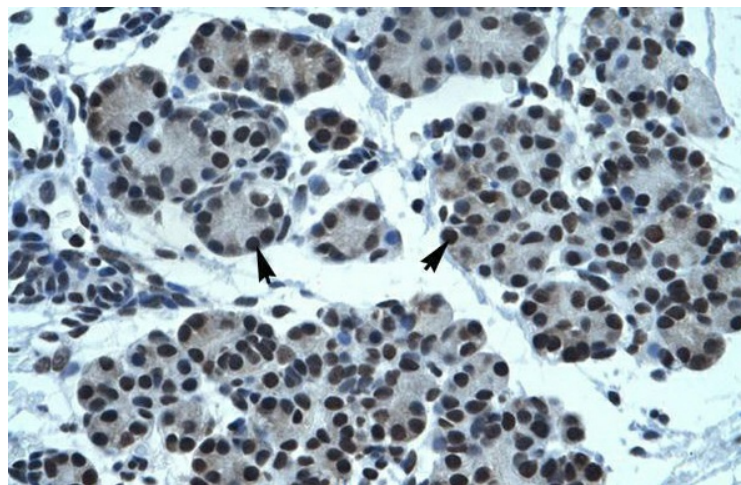
[View online »](#)

Protein Families: Druggable Genome, Transmembrane

Product images:



WB Suggested Anti-TPTE Antibody Titration: 1.25 ug/ml; ELISA Titer: 1:1562500; Positive Control: HepG2 cell lysate



Human Pancreas