

Product datasheet for **TA341718**

GABA A Receptor gamma 2 (GABRG2) Rabbit Polyclonal Antibody

Product data:

| | |
|--------------------------------|--|
| Product Type: | Primary Antibodies |
| Applications: | WB |
| Recommended Dilution: | WB |
| Reactivity: | Human |
| Host: | Rabbit |
| Isotype: | IgG |
| Clonality: | Polyclonal |
| Immunogen: | The immunogen for Anti-GABRG2 antibody is: synthetic peptide directed towards the N-terminal region of Human GABRG2. Synthetic peptide located within the following region: VPEGDVTVILNNLLEGYDNKLRPDIGVKPTLIHTDMYVNSIGPVNAINME |
| Formulation: | Liquid. Purified antibody supplied in 1x PBS buffer with 0.09% (w/v) sodium azide and 2% sucrose. <i>Note that this product is shipped as lyophilized powder to China customers.</i> |
| Concentration: | lot specific |
| Conjugation: | Unconjugated |
| Storage: | Store at -20°C as received. |
| Stability: | Stable for 12 months from date of receipt. |
| Predicted Protein Size: | 52 kDa |
| Gene Name: | gamma-aminobutyric acid type A receptor gamma2 subunit |
| Database Link: | NP_944494 Entrez Gene 2566 Human P18507 |
| Background: | This gene encodes a gamma-aminobutyric acid (GABA) receptor. GABA isThe major inhibitory neurotransmitter inThe mammalian brain, where it acts at GABA-A receptors, which are ligand-gated chloride channels. GABA-A receptors are pentameric, consisting of proteins from several subunit classes: alpha, beta, gamma, delta and rho. Mutations inThis gene have been associated with epilepsy and febrile seizures. Multiple transcript variants encoding different isoforms have been identified forThis gene. [provided by RefSeq, Jul 2008] |



[View online »](#)

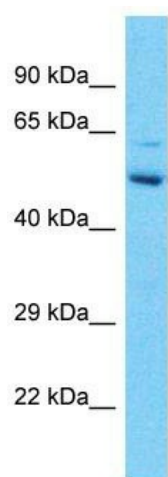
Synonyms: CAE2; ECA2; GEFSP3

Note: Immunogen Sequence Homology: Dog: 100%; Pig: 100%; Rat: 100%; Horse: 100%; Human: 100%; Mouse: 100%; Bovine: 100%; Rabbit: 100%; Guinea pig: 100%

Protein Families: Druggable Genome, Ion Channels: Cys-loop Receptors, Transmembrane

Protein Pathways: Neuroactive ligand-receptor interaction

Product images:



Host: Rabbit

Target Name: GABRG2

Sample Tissue: Esophagus Tumor Lysate

Antibody Dilution: 1.0 μ g/ml

Host: Rabbit; Target Name: GABRG2; Sample Tissue: Esophagus Tumor lysates; Antibody Dilution: 1.0 ug/ml