

Product datasheet for **TA341716**

KCNK6 Rabbit Polyclonal Antibody

Product data:

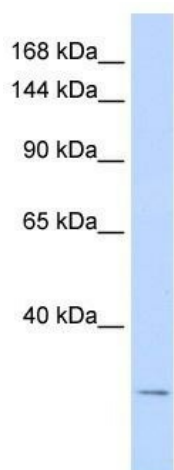
Product Type:	Primary Antibodies
Applications:	WB
Recommended Dilution:	WB
Reactivity:	Human
Host:	Rabbit
Isotype:	IgG
Clonality:	Polyclonal
Immunogen:	The immunogen for anti-KCNK6 antibody: synthetic peptide directed towards the n terminal of human KCNK6. Synthetic peptide located within the following region: RLGRVVLANASGSANASDPAWDFASALFFASTLITTVGYGYTTPLTADAGK
Formulation:	Liquid. Purified antibody supplied in 1x PBS buffer with 0.09% (w/v) sodium azide and 2% sucrose. <i>Note that this product is shipped as lyophilized powder to China customers.</i>
Concentration:	lot specific
Conjugation:	Unconjugated
Storage:	Store at -20°C as received.
Stability:	Stable for 12 months from date of receipt.
Predicted Protein Size:	34 kDa
Gene Name:	potassium two pore domain channel subfamily K member 6
Database Link:	NP_004814 Entrez Gene 9424 Human Q9Y257
Background:	This gene encodes one of the members of the superfamily of potassium channel proteins containing two pore-forming P domains. This channel protein, considered an open rectifier, is widely expressed. It is stimulated by arachidonic acid, and inhibited by internal acidification and volatile anaesthetics. [provided by RefSeq, Jul 2008]
Synonyms:	K2p6.1; KCNK8; TOSS; TWIK-2; TWIK2
Note:	Immunogen Sequence Homology: Pig: 100%; Human: 100%; Bovine: 100%



[View online »](#)

Protein Families: Druggable Genome, Ion Channels: Potassium, Transmembrane

Product images:



WB Suggested Anti-KCNK6 Antibody Titration:
0.2-1 ug/ml; ELISA Titer: 1:1562500; Positive
Control: Hela cell lysate