

Product datasheet for **TA341715**

TRPC6 Rabbit Polyclonal Antibody

Product data:

Product Type:	Primary Antibodies
Applications:	IHC, WB
Recommended Dilution:	WB, IHC
Reactivity:	Human
Host:	Rabbit
Isotype:	IgG
Clonality:	Polyclonal
Immunogen:	The immunogen for anti-TRPC6 antibody: synthetic peptide directed towards the C terminal of human TRPC6. Synthetic peptide located within the following region: GHKKGFQEDAEMNKINEEKKLILGSHEDLSKLSLDKKQVGHNKQPSIRS
Formulation:	Liquid. Purified antibody supplied in 1x PBS buffer with 0.09% (w/v) sodium azide and 2% sucrose. <i>Note that this product is shipped as lyophilized powder to China customers.</i>
Concentration:	lot specific
Conjugation:	Unconjugated
Storage:	Store at -20°C as received.
Stability:	Stable for 12 months from date of receipt.
Predicted Protein Size:	107 kDa
Gene Name:	transient receptor potential cation channel subfamily C member 6
Database Link:	NP_004612 Entrez Gene 7225 Human Q9Y210
Background:	The protein encoded byThis gene forms a receptor-activated calcium channel inThe cell membrane.The channel is activated by diacylglycerol and is thought to be underThe control of a phosphatidylinositol second messenger system. Activation ofThis channel occurs independently of protein kinase C and is not triggered by low levels of intracellular calcium. Defects inThis gene are a cause of focal segmental glomerulosclerosis 2 (FSGS2). [provided by RefSeq, Mar 2009]



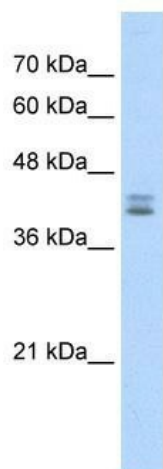
[View online »](#)

Synonyms: FSGS2; TRP6

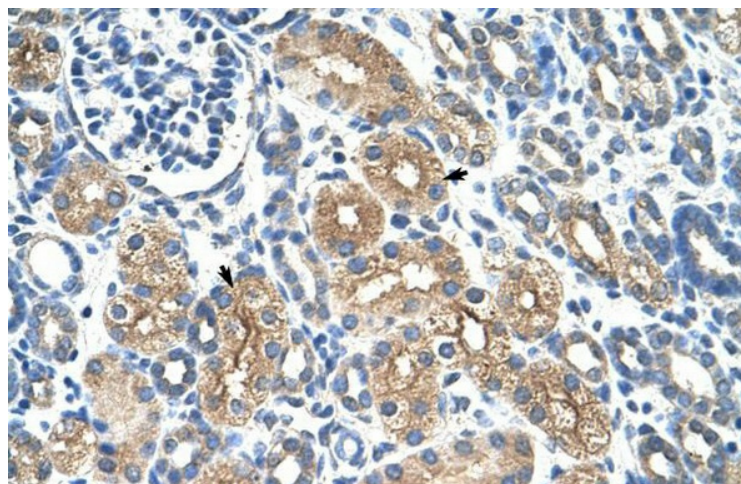
Note: Immunogen Sequence Homology: Pig: 100%; Horse: 100%; Human: 100%

Protein Families: Druggable Genome, Ion Channels: Transient receptor potential, Transmembrane

Product images:



WB Suggested Anti-TRPC6 Antibody Titration: 2.5 ug/ml; Positive Control: HepG2 cell lysate



Human kidney