

Product datasheet for **TA341714**

ADAR1 (ADAR) Rabbit Polyclonal Antibody

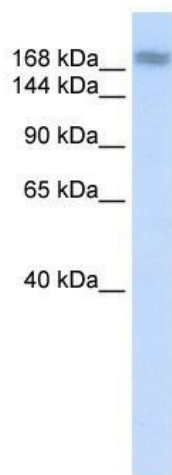
Product data:

Product Type:	Primary Antibodies
Applications:	WB
Recommended Dilution:	WB
Reactivity:	Human
Host:	Rabbit
Isotype:	IgG
Clonality:	Polyclonal
Immunogen:	The immunogen for anti-ADAR antibody: synthetic peptide directed towards the N terminal of human ADAR. Synthetic peptide located within the following region: GEGKATTAHDLGKLGTPKKEINRVLYSLAKKGKLQKEAGTPPLWKIAVS
Formulation:	Liquid. Purified antibody supplied in 1x PBS buffer with 0.09% (w/v) sodium azide and 2% sucrose. <i>Note that this product is shipped as lyophilized powder to China customers.</i>
Concentration:	lot specific
Conjugation:	Unconjugated
Storage:	Store at -20°C as received.
Stability:	Stable for 12 months from date of receipt.
Predicted Protein Size:	136 kDa
Gene Name:	adenosine deaminase, RNA-specific
Database Link:	NP_001102 Entrez Gene 103 Human P55265



[View online »](#)

Background:	This gene encodes a protein that sorts transmembrane proteins into lysosomes/vacuoles viaThe multivesicular body (MVB) pathway.This protein, along with other soluble coiled-coil containing proteins, forms part ofThe ESCRT-III protein complex that binds toThe endosomal membrane and recruits additional cofactors for protein sorting intoThe MVB.This protein may also co-immunoprecipitate with a member ofThe IFG-binding protein superfamily. Alternative splicing results in multiple transcript variants. Read-through transcription also exists betweenThis gene andThe upstream ring finger protein 103 (RNF103) gene. [provided by RefSeq, Nov 2010]
Synonyms:	ADAR1; AGS6; DRADA; DSH; DSRAD; G1P1; IFI-4; IFI4; K88DSRBP; P136
Note:	Immunogen Sequence Homology: Human: 100%
Protein Families:	Druggable Genome
Protein Pathways:	Cytosolic DNA-sensing pathway

Product images:

WB Suggested Anti-ADAR Antibody Titration: 0.2-1 ug/ml; ELISA Titer: 1:62500; Positive Control: Human Muscle