

Product datasheet for **TA341713**

ADAR1 (ADAR) Rabbit Polyclonal Antibody

Product data:

Product Type:	Primary Antibodies
Applications:	WB
Recommended Dilution:	WB
Reactivity:	Human
Host:	Rabbit
Isotype:	IgG
Clonality:	Polyclonal
Immunogen:	The immunogen for anti-ADAR antibody: synthetic peptide directed towards the C terminal of human ADAR. Synthetic peptide located within the following region: RMGFTEVTPVTGASLRRTMLLSRSPEAQPRTLPLTGSTFHDQIAMLSHR
Formulation:	Liquid. Purified antibody supplied in 1x PBS buffer with 0.09% (w/v) sodium azide and 2% sucrose. <i>Note that this product is shipped as lyophilized powder to China customers.</i>
Concentration:	lot specific
Purification:	Affinity Purified
Conjugation:	Unconjugated
Storage:	Store at -20°C as received.
Stability:	Stable for 12 months from date of receipt.
Predicted Protein Size:	136 kDa
Gene Name:	adenosine deaminase, RNA-specific
Database Link:	NP_001102 Entrez Gene 103 Human P55265



[View online »](#)

Background:

This gene encodes a protein that sorts transmembrane proteins into lysosomes/vacuoles via the multivesicular body (MVB) pathway. This protein, along with other soluble coiled-coil containing proteins, forms part of the ESCRT-III protein complex that binds to the endosomal membrane and recruits additional cofactors for protein sorting into the MVB. This protein may also co-immunoprecipitate with a member of the IFG-binding protein superfamily. Alternative splicing results in multiple transcript variants. Read-through transcription also exists between this gene and the upstream ring finger protein 103 (RNF103) gene. [provided by RefSeq, Nov 2010]

Synonyms:

ADAR1; AGS6; DRADA; DSH; DSRAD; G1P1; IFI-4; IFI4; K88DSRBP; P136

Note:

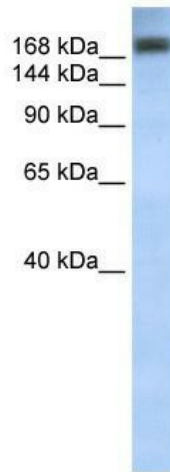
Immunogen Sequence Homology: Rat: 100%; Pig: 92%; Horse: 92%; Human: 92%; Rabbit: 92%; Guinea pig: 92%; Mouse: 91%

Protein Families:

Druggable Genome

Protein Pathways:

Cytosolic DNA-sensing pathway

Product images:

WB Suggested Anti-ADAR Antibody Titration: 0.2-1 ug/ml; ELISA Titer: 1:62500; Positive Control: Human Muscle