

Product datasheet for **TA341712**

Z DNA binding protein (ZBP1) Rabbit Polyclonal Antibody

Product data:

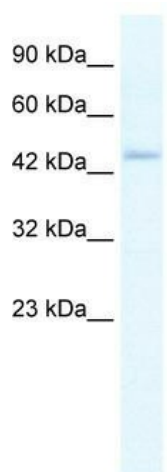
Product Type:	Primary Antibodies
Applications:	WB
Recommended Dilution:	WB
Reactivity:	Human
Host:	Rabbit
Isotype:	IgG
Clonality:	Polyclonal
Immunogen:	The immunogen for anti-ZBP1 antibody: synthetic peptide directed towards the middle region of human ZBP1. Synthetic peptide located within the following region: LYRMKSRHLLDMDEQSKAWTIYRPEDSGRRAKSASIIYQHNPINMICQNG
Formulation:	Liquid. Purified antibody supplied in 1x PBS buffer with 0.09% (w/v) sodium azide and 2% sucrose. <i>Note that this product is shipped as lyophilized powder to China customers.</i>
Concentration:	lot specific
Conjugation:	Unconjugated
Storage:	Store at -20°C as received.
Stability:	Stable for 12 months from date of receipt.
Predicted Protein Size:	47 kDa
Gene Name:	Z-DNA binding protein 1
Database Link:	NP_110403 Entrez Gene 81030 Human Q9H171
Background:	This gene encodes a Z-DNA binding protein. The encoded protein plays a role in the innate immune response by binding to foreign DNA and inducing type-I interferon production. Alternatively spliced transcript variants encoding multiple isoforms have been observed for this gene. [provided by RefSeq, Dec 2011]
Synonyms:	C20orf183; DA1; DLM-1; DLM1
Note:	Immunogen Sequence Homology: Human: 100%



[View online »](#)

Protein Pathways: Cytosolic DNA-sensing pathway

Product images:



Rabbit Anti- ZBP1 Antibody
Catalog Number: ARP36711
Lot Number: QC5738
Lane: Jurkat Cell Lysate

Antibody Titration: 5.0 μ g/ml
Gel Concentration: 12%

WB Suggested Anti-ZBP1 Antibody; Titration: 5.0 ug/ml; Positive Control: HepG2 Whole Cell